

# Safeguarding & Child Protection

Beavers Community Primary School



Respect - Determination - Cooperation - Equality - Honesty - Kindness

**Approved by:** Governors **Date:** October 2024

**Last reviewed on:** September 2023

**Next review due by:** September 2025

## Contents

Important contacts	3
1. Aims	4
2. Legislation and statutory guidance	4
3. Definitions	5
4. Equality statement	6
5. Roles and responsibilities	6
6. Confidentiality	10
7. Recognising abuse and taking action	11
8. Online safety, filtering and monitoring and the use of mobile technology	19
9. Notifying parents or carers	21
10. Pupils with special educational needs, disabilities or health issues	21
11. Pupils with a social worker	22
12. Looked-after and previously looked-after children	22
13. Complaints and concerns about school safeguarding policies	23
14. Record-keeping	23
15. Training	24
16. Monitoring arrangements	25
17. Links with other policies	25
Appendix 1: types of abuse	27
Appendix 2: safer recruitment and DBS checks – policy and procedures	28
Appendix 3: allegations of abuse made against staff (including low-level concerns)	33
Appendix 4: specific safeguarding issues	40

## 1. Important Contacts

ROLE/ORGANISATION	NAME	CONTACT DETAILS
Designated safeguarding lead (DSL)	Sarah Smith	head@beavers.hounslow.sch.uk
Deputy DSL Child Protection Officer	Hannah Hunter Tracey Bunce	<a href="mailto:h.hunter@beavers.hounslow.sch.uk">h.hunter@beavers.hounslow.sch.uk</a> <a href="mailto:t.bunce@beavers.hounslow.sch.uk">t.bunce@beavers.hounslow.sch.uk</a>
Local authority designated officer (LADO)		
Chair of governors		
Channel helpline		020 7340 7264

## 2. Introduction

This document is a statement of the aims and principles for Safeguarding and Child Protection at Beavers Community Primary School.

Beavers Community Primary School is an equal opportunities school. All pupils within school will have the same opportunity to realise their potential regardless of gender, ability, ethnicity, religion, language, class and physical ability. Some key points are:

- Equality of opportunity is a cross-curricular issue; opportunities are identified and utilised in each curriculum area or topic.
- The language and learning needs of bilingual pupils are acknowledged in all subject areas.
- The use of assessment contributes to a positive understanding of race, gender, disability, equality, ethnic and cultural diversity.
- Children should work in a variety of different groupings depending on a particular activity. They work individually, in pairs or in groups (e.g. same ability, mixed ability, single sex, friendship, role model etc.).
- We offer activities of a non-stereotypical nature.
- Children have opportunities to share cultural and other experiences in the classroom.

Some children have an increased risk of abuse, and additional barriers can exist for some children with respect to recognising or disclosing it. We are committed to anti-discriminatory practice and recognise children's diverse circumstances. We ensure that all children have the same protection, regardless of any barriers they may face.

We give special consideration to children who:

- Have special educational needs (SEN) or disabilities or health conditions
- Are young carers
- May experience discrimination due to their race, ethnicity, religion, gender identification or sexuality

- Have English as an additional language
- Are known to be living in difficult situations – for example, temporary accommodation or where there are issues such as substance abuse or domestic violence
- Are at risk of FGM, sexual exploitation, forced marriage, or radicalisation
- Are asylum seekers
- Are looked after or previously looked after (see section 11)
- Are missing from education
- Whose parent/carer has expressed an intention to remove them from school to be home educated

Beavers Community Primary School is a Rights Respecting School and it is the responsibility of all stakeholders covered by this policy to ensure that these rights are inviolate.

The school has three commitments that underpin this policy:

- To learn
- To be safe
- To show mutual respect

Beavers Community Primary School is a school that holds values central to all of its work and this policy must be applied in line with the school's values system.

### 3. Aims

The school aims to ensure that:

- Appropriate action is taken in a timely manner to safeguard and promote children's welfare
- All staff are aware of their statutory responsibilities with respect to safeguarding
- Staff are properly trained in recognising and reporting safeguarding issues

### 4. Legislation, statutory requirements and statutory guidance

This policy is based on the Department for Education's statutory guidance, [Keeping Children Safe in Education 2024](#) and [Working Together to Safeguard Children](#), and the [Governance Handbook](#). We comply with this guidance and the procedures set out by our local safeguarding children partnership.

This policy is also based on the following legislation:

- Section 175 of the [Education Act 2002](#), which places a duty on schools and local authorities to safeguard and promote the welfare of pupils
- [The School Staffing \(England\) Regulations 2009](#), which set out what must be recorded on the single central record and the requirement for at least one person on a school interview/appointment panel to be trained in safer recruitment techniques
- [The Children Act 1989](#) (and [2004 amendment](#)), which provides a framework for the care and protection of children
- Section 5B(11) of the Female Genital Mutilation Act 2003, as inserted by section 74 of the [Serious Crime Act 2015](#), which places a statutory duty on teachers to report to the police where they discover that female genital mutilation (FGM) appears to have been carried out on a girl under 18
- [Statutory guidance on FGM](#), which sets out responsibilities with regards to safeguarding and supporting girls affected by FGM

- [The Rehabilitation of Offenders Act 1974](#), which outlines when people with criminal convictions can work with children
- Schedule 4 of the [Safeguarding Vulnerable Groups Act 2006](#), which defines what 'regulated activity' is in relation to children
- [Statutory guidance on the Prevent duty](#), which explains schools' duties under the Counter-Terrorism and Security Act 2015 with respect to protecting people from the risk of radicalisation and extremism
- The [Childcare \(Disqualification\) and Childcare \(Early Years Provision Free of Charge\) \(Extended Entitlement\) \(Amendment\) Regulations 2018](#) (referred to in this policy as the "2018 Childcare Disqualification Regulations") and [Childcare Act 2006](#), which set out who is disqualified from working with children
- This policy also meets requirements relating to safeguarding and welfare in the [statutory framework for the Early Years Foundation Stage](#)
- [The Human Rights Act 1998](#), which explains that being subjected to harassment, violence and/or abuse, including that of a sexual nature, may breach any or all of the rights which apply to individuals under the [European Convention on Human Rights](#) (ECHR)
- [The Equality Act 2010](#), which makes it unlawful to discriminate against people regarding particular protected characteristics (including disability, sex, sexual orientation, gender reassignment and race). This means our governors and headteacher should carefully consider how they are supporting their pupils with regard to these characteristics. The Act allows our school to take positive action to deal with particular disadvantages affecting pupils (where we can show it's proportionate). This includes making reasonable adjustments for disabled pupils. For example, it could include taking positive action to support girls where there's evidence that they're being disproportionately subjected to sexual violence or harassment
- [The Public Sector Equality Duty \(PSED\)](#), which explains that we must have due regard to eliminating unlawful discrimination, harassment and victimisation. The PSED helps us to focus on key issues of concern and how to improve pupil outcomes. Some pupils may be more at risk of harm from issues such as sexual violence; homophobic, biphobic or transphobic bullying; or racial discrimination

## 5. Definitions

**Safeguarding and promoting the welfare of children** means:

Protecting children from maltreatment

Preventing impairment of children's mental and physical health or development

Ensuring that children grow up in circumstances consistent with the provision of safe and effective care

Taking action to enable all children to have the best outcomes

**Child protection** is part of this definition and refers to activities undertaken to prevent children suffering, or being likely to suffer, significant harm.

**Abuse** is a form of maltreatment of a child, and may involve inflicting harm or failing to act to prevent harm. Appendix 1 explains the different types of abuse.

**Neglect** is a form of abuse and is the persistent failure to meet a child's basic physical and/or psychological needs, likely to result in the serious impairment of the child's health or development. Appendix 1 defines neglect in more detail.

**Sharing of nudes and semi-nudes** (also known as sexting or youth-produced sexual imagery) is where children share nude or semi-nude images, videos or live streams. This also includes pseudo-images that are computer-generated images that otherwise appear to be a photograph or video.

**Children** includes everyone under the age of 18.

The following 3 **safeguarding partners** are identified in Keeping Children Safe in Education (and defined in the Children Act 2004, as amended by chapter 2 of the Children and Social Work Act 2017). They will make arrangements to work together to safeguard and promote the welfare of local children, including identifying and responding to their needs:

- The local authority (LA)
- A clinical commissioning group for an area within the LA
- The chief officer of police for a police area in the LA area

**Victim** is a widely understood and recognised term, but we understand that not everyone who has been subjected to abuse considers themselves a victim, or would want to be described that way. When managing an incident, we will be prepared to use any term that the child involved feels most comfortable with.

**Alleged perpetrator(s)** and **perpetrator(s)** are widely used and recognised terms. However, we will think carefully about what terminology we use (especially in front of children) as, in some cases, abusive behaviour can be harmful to the perpetrator too. We will decide what's appropriate and which terms to use on a case-by-case basis.

## 6. Roles and responsibilities

Safeguarding and child protection is **everyone's** responsibility. This policy applies to all staff, volunteers and governors in the school and is consistent with the procedures of Hounslow Safeguarding Children's Partnership (HSCP). Our policy and procedures also apply to extended school and off-site activities.

### 6.1 All Staff

All Staff will:

All staff will read and understand part 1 and Annex A of the Department for Education's statutory safeguarding guidance, Keeping Children Safe in Education, and review this guidance at least annually.

All staff will complete an assessment at the beginning of each academic year to say that they have reviewed the guidance and read part 1 of KCSIE 2021.

Reinforce the importance of online safety when communicating with parents. This includes making parents aware of what we ask children to do online (e.g. sites they need to visit or who they'll be interacting with online)

Provide a safe space for pupils who are LGBT to speak out and share their concerns

All staff will be aware of:

- Our systems which support safeguarding, including the staff behaviour policy/code of conduct, the role of the designated safeguarding lead (DSL), the behaviour policy, and the safeguarding response to children who go missing from education
- The early help process and their role in it, including identifying emerging problems, liaising with the DSL, and sharing information with other professionals to support early identification and assessment
- The process for making referrals to local authority children's social care and for statutory assessments that may follow a referral, including the role they might be expected to play
- What to do if they identify a safeguarding issue or a child tells them they are being abused or neglected, including specific issues such as FGM, and how to maintain an appropriate level of confidentiality while liaising with relevant professionals
- The signs of different types of abuse and neglect, as well as specific safeguarding issues, such as child-on-child abuse, child sexual exploitation (CSE), child criminal exploitation (CCE), indicators of being at risk from or involved with serious violent crime, FGM, radicalisation and serious violence (including that linked to county lines)
- The importance of reassuring victims that they are being taken seriously and that they will be supported and kept safe
- The fact that children can be at risk of harm inside and outside of their home, at school and online
- The fact that children who are (or who are perceived to be) lesbian, gay, bi or trans (LGBT) can be targeted by other children
- What to look for to identify children who need help or protection
- The filtering and monitoring system in place and how to raise concerns about it's effectiveness.

## 6.2 Designated Safeguarding Lead (DSL)

The DSL is a member of the senior leadership team. Our DSL is Sarah Smith (headteacher). The DSL takes lead responsibility for child protection and wider safeguarding in the school. During term time, the DSL will be available during school hours for staff to discuss any safeguarding concerns.

If the DSL is absent, the deputy DSL – Hannah Hunter and Children Protection Officer – Tracey Bunce will be available to lead responsibility for children protection and safeguarding.

- Ensure that all staff know and are alert to signs of possible abuse and know the correct procedures to follow if there are concerns or suspicions.
- Ensure all stakeholders feel able to raise concerns.
- Liaise with, monitor the work of and manage the designated staff member for child protection and hold them to account for maintaining systems that have been put in place.
- Ensure robust systems are in place so that written records of concerns are kept about a child even if there is no need to make an immediate referral.
- Ensuring contact details are up to date and providing school with **2 or more** emergency contact numbers.

- Ensure that necessary staff members are briefed in Hounslow telephone procedures. Procedures can be found in the Staff Zone and a paper copy can be found in the admin office.
- Ensure the writing, development and review of the Safeguarding and Child Protection policies.
- Ensure records of case conferences and other sensitive information in a secure, confidential file located in the main office.
- Disseminate information on a need to know basis, bearing in mind the importance of confidentiality.
- Ensure systems are in place to pass on records when a child on the Child Protection register leaves the school.
- Raise staff awareness of and confidence on Child Protection procedures and ensure that all new employees receive training and that training refresher courses are attended.
- Ensure that staff members understand how to talk to children in a variety of situations, such as not to ask leading questions or promise that information will be kept secret.
- Attend relevant training at least every 2 years.
- Ensure that all employees know that any information revealed is confidential.
- Encourage staff to consider how the curriculum and extra-curricular activities might empower children, showing the power of the children's voice in all aspects of our extended school day and beyond.
- Continue our close liaison with outside agencies and develop new contacts as appropriate.
- Ensure systems are in place to support staff members, who have handled disclosures, give evidence in court or attend case conferences.
- Ensure governors and employees are kept up-to-date with current legislation, procedures and processes with regard to safeguarding children.
- Provide advice and support to other staff on child welfare and child protection matters
- Take part in strategy discussions and inter-agency meetings and/or support other staff to do so
- Contribute to the assessment of children
- Refer suspected cases, as appropriate, to the relevant body (local authority children's social care, Channel programme, Disclosure and Barring Service, and/or police), and support staff who make such referrals directly
- Have a good understanding of harmful sexual behaviour
- Liaise with local authority case managers and designated officers for child protection concerns as appropriate
- Discuss the local response to sexual violence and sexual harassment with police and local authority children's social care colleagues to prepare the school's policies
- Be confident that they know what local specialist support is available to support all children involved (including victims and alleged perpetrators) in sexual violence and sexual harassment, and be confident as to how to access this support
- Be aware that children must have an 'appropriate adult' to support and help them in the case of a police investigation or search
- Ensure robust IT filtering systems are in place, ensure staff are trained about the filtering system.
- Ensure the filtering system is monitored regularly and at least yearly



### 6.3 Designated Staff Member for Child Protection (DSM)

- Seek advice from and work to the DSL and deputy DSLs.
- Keeping a list of up-dated contacts related to child protection and safeguarding and make this available to necessary staff.
- Keep written records of concerns about a child, in line with school systems, even if there is no need to make an immediate referral. All such records are to be kept confidentially and securely and are separate from pupil records and are copied on to the child's next school or college.
- If there are concerns about possible abuse, ensure referrals to Early Help in Hounslow are complete, and followed up, and act as a focal point for staff to discuss concerns. Referrals should be made in writing, following a telephone call using an CFAN (Early Help in Hounslow) form.
- Communicate with DSL and deputy DSL regarding referrals, even if it's after the referral has occurred. Where possible communicate with the DSL or deputy DSL prior to referral so all necessary parties are aware and can make most informed decision for wellbeing of the child(ren).
- Monitor children on the child protection register (or those causing concern) in school, e.g. attendance & achievement etc., through liaising with appropriate stakeholders. If any child is absent for 3 days without a reason, a safeguarding absent form must be completed.
- Liaise with named social workers for children.
- Ensure that Hounslow telephone procedures are followed. Procedures can be found in the Staff Zone and a paper copy can be found in the admin office.
- Facilitate and support the development of the safeguarding and child protection policies.
- Maintain records of case conferences and other sensitive information in a secure, confidential file located in the main office.
- Maintain school systems for reporting on child protection issues and present this weekly during inclusion meetings.
- Disseminate information on a need to know basis, acting on instruction or advice from the designated safeguarding (deputy) lead where necessary, bearing in mind the importance of confidentiality.
- Pass on records when a child on the child protection register leaves the school and track child to new setting.
- Ensure that information held by a transferring pupil is sent quickly and social services are informed.
- Support staff in accurately recording information when a disclosure has been made.
- Support staff when talking to children in a variety of situations.
- Attend relevant training at least every 2 years.
- Ensure that all staff members know that any information revealed is confidential.
- Continue our close liaison with outside agencies and develop new contacts as appropriate.
- Support staff members, who have handled disclosures, give evidence in court or attend case conferences.
- Provide advice and support to other staff on child welfare and child protection matters
- Take part in strategy discussions and inter-agency meetings and/or support other staff to do so
- Contribute to the assessment of children

- Refer suspected cases, as appropriate, to the relevant body (local authority children’s social care, Channel programme, Disclosure and Barring Service, and/or police), and support staff who make such referrals directly
- Have a good understanding of harmful sexual behaviour
- Provide a termly report for the governing body.
- **Respond to Operation Encompass is a Police and Education early intervention safeguarding partnership which supports children and young people exposed to domestic abuse.**
  - Operation Encompass is the reporting to schools before the start of the next school day when a child or young person has been involved or exposed to a domestic abuse incident the previous evening.
  - The information is given in strict confidence to a school’s Key Adult to enable support to be given dependent on the needs and wishes of the child.

## 6.4 The Governing Body

- Facilitate a whole-school approach to safeguarding, ensuring that safeguarding and child protection are at the forefront of, and underpin, all relevant aspects of process and policy development
- Evaluate and approve this policy at each review, ensuring it complies with the law, and hold the headteacher to account for its implementation
- Be aware of its obligations under the Human Rights Act 1998, the Equality Act 2010 (including the Public Sector Equality Duty), and our school’s local multi-agency safeguarding arrangements
- Make sure:
  - The DSL has the appropriate status and authority to carry out their job, including additional time, funding, training, resources and support
  - Online safety is a running and interrelated theme within the whole-school approach to safeguarding and related policies
  - The leadership team and relevant staff are aware of and understand the IT filters and monitoring systems in place, manage them effectively and know how to escalate concerns
  - The school has procedures to manage any safeguarding concerns (no matter how small) or allegations that do not meet the harm threshold (low-level concerns) about staff members (including supply staff, volunteers and contractors). Appendix 3 of this policy covers this procedure
  - That this policy reflects that children with SEND, or certain medical or physical health conditions, can face additional barriers to any abuse or neglect being recognised
  - Where another body is providing services or activities (regardless of whether or not the children who attend these services/activities are children on the school roll):
  - Seek assurance that the other body has appropriate safeguarding and child protection policies/procedures in place, and inspect them if needed
  - Make sure there are arrangements for the body to liaise with the school about safeguarding arrangements, where appropriate
  - Make sure that safeguarding requirements are a condition of using the school premises, and that any agreement to use the premises would be terminated if the other body fails to comply

- Be involved in the monitoring of the schools IT filtering process to review it's effectiveness.

The chair of governors will act as the 'case manager' in the event that an allegation of abuse is made against the headteacher, where appropriate (see appendix 3).

All governors will read Keeping Children Safe in Education in its entirety.

Section 15 of this policy has information on how governors are supported to fulfil their role.

## 6.5 The Headteacher

The Headteacher is responsible for the implementation of this policy, including:

- Ensuring that staff (including temporary staff) and volunteers:
  - Are informed of our systems which support safeguarding, including this policy, as part of their induction
  - Understand and follow the procedures included in this policy, particularly those concerning referrals of cases of suspected abuse and neglect
- Communicating this policy to parents when their child joins the school and via the school website
- Ensuring that the DSL has appropriate time, funding, training and resources, and that there is always adequate cover if the DSL is absent
- Ensuring that all staff undertake appropriate safeguarding and child protection training, and updating the content of the training regularly
- Acting as the 'case manager' in the event of an allegation of abuse made against another member of staff or volunteer, where appropriate (see appendix 3)
- Ensuring the relevant staffing ratios are met, where applicable
- Making sure each child in the Early Years Foundation Stage is assigned a key person
- Making decisions regarding all low-level concerns, though they may wish to collaborate with the DSL on this
- Acting as the 'case manager' in the event of an allegation of abuse made against another member of staff or volunteer, where appropriate (see appendix 3)

## 6.6 Virtual school heads

- Virtual school heads have a non-statutory responsibility for the strategic oversight of the educational attendance, attainment and progress of pupils with a social worker.
- They should also identify and engage with key professionals, e.g. DSLs, SENCOs, social workers, mental health leads and others.

## 7. Safety in School

- No internal doors to classrooms will be locked whilst pupils are present in these areas.
- Entry to School premises will be controlled by doors that are secured physically or by constant staff supervision.
- Authorised visitors to the school will be logged into and out of the premises and will be asked to wear their identity badges or be issued with school visitor badges.
- Unidentified visitors will be challenged by staff or reported to the Headteacher or school office. Carelessness in closing any controlled entrance will be challenged.

- The presence of intruders and suspicious strangers seen loitering near the school or approaching pupils, will be reported to the Police by calling 101 or 999, depending on the circumstances and the urgency of the case so that if police stops these individuals they can be spoken to about what they were doing and dealt with accordingly. Brief information about the incident will be sent to LA's Schools Safeguarding Coordinator with a view to alerting other local schools in liaison with the police and through appropriate systems.
- Parents, carers or relatives may only take still or video photographic images of pupils in school or on school-organised activities with the prior consent of the school and then only in designated areas. Images taken must be for private use only. Recording and/or photographing other than for private use would require the consent of the other parents whose children may be captured on film. Without this consent the Data Protection legislation would be breached. If parents do not wish their children to be photographed or filmed and express this view in writing, their rights will be respected.

## 8. Online Safety and the use of mobile technology

Beavers Community Primary school recognises the importance of safeguarding children from potentially harmful and inappropriate online material, and we understand that technology is a significant component in many safeguarding and wellbeing issues. The school has an effective ICT and Online Safety policy to ensure pupils and staff are aware of how to stay safe online.

To address this, our school aims to:

- Have robust processes in place to ensure the online safety of pupils, staff, volunteers and governors
- Protect and educate the whole school community in its safe and responsible use of technology, including mobile and smart technology (which we refer to as 'mobile phones')
- Set clear guidelines for the use of mobile phones for the whole school community
- Establish clear mechanisms to identify, intervene in and escalate any incidents or concerns, where appropriate

### The 4 key categories of risk

Our approach to online safety is based on addressing the following categories of risk:

- **Content** – being exposed to illegal, inappropriate or harmful content, such as pornography, fake news, racism, misogyny, self-harm, suicide, anti-Semitism, radicalisation and extremism
- **Contact** – being subjected to harmful online interaction with other users, such as child-to-child pressure, commercial advertising and adults posing as children or young adults with the intention to groom or exploit them for sexual, criminal, financial or other purposes
- **Conduct** – personal online behaviour that increases the likelihood of, or causes, harm, such as making, sending and receiving explicit images (e.g. consensual and non-consensual sharing of nudes and semi-nudes and/or pornography), sharing other explicit images and online bullying; and

- **Commerce** – risks such as online gambling, inappropriate advertising, phishing and/or financial scams

The Leader of ICT and computing and DSL work together to ensure they are:

- able to understand the unique risks associated with online safety and be confident that they have the relevant knowledge and up to date capability required to keep children safe whilst they are online at school
- Using most up to date guidance to inform the online safety curriculum for example the DfE document “Teaching Online Safety in Schools”.
- able to recognise the additional risks that children with SEN and disabilities (SEND) face online, for example, from online bullying, grooming and radicalisation and develop ways to ensure our these more vulnerable pupils are supported to stay safe online.
- Education pupils about online safety as part of our curriculum For example: The safe use of social media, the internet and technology, keeping personal information private and how to recognise unacceptable behaviour online.

### **Mobile phones and cameras**

- Staff are allowed to bring their personal phones to school for their own use, but will limit such use to non-contact time when pupils are not present. Staff members’ personal phones will remain in their bags or cupboards during contact time with pupils.
- Staff will not take pictures or recordings of pupils on their personal phones or cameras.
- We will follow the General Data Protection Regulation and Data Protection Act 2018 when taking and storing photos and recordings for use in the school.
- All staff have read and signed the acceptable use policy to ensure children are safeguarded in relation to mobile phones and internet usage.

### **Filtering and Monitoring**

- Filtering refers to the technology preventing access to harmful or inappropriate content, whilst monitoring refers to the practical steps staff take to ensure harmful or inappropriate access is not made.
- The school will ensure that appropriate filtering systems are in place on school devices and school networks to prevent children accessing inappropriate material The school will, however, ensure that the use of filtering and monitoring systems does not cause “over blocking”, which may lead to unreasonable restrictions as to what pupils can be taught online. The school will also ensure that it meets the [filtering and monitoring standards](#) published by the DfE.

Monitoring at Beavers includes

- Physical monitoring of pupils usage
  - Live monitoring using SENSO safeguarding
  - Monitoring user logs
  - Monitoring individual devices
- We make sure that any school devices used away from the school site are also subject to filtering and monitoring procedures.

- Each year (at least) our designated safeguarding lead, along with our IT team and a governor, review our filtering and monitoring procedures to ensure that they effectively prevent access to harmful or inappropriate content. They also ensure that the systems we have in place to report any difficulties with the system are understood by all staff and reports are effectively managed.
- Staff will be aware of the filtering and monitoring systems in place and will know how to escalate concerns where they are identified. Staff will be made aware of their expectations and responsibilities relating to filtering and monitoring systems during their induction.
- All our staff have taken part in annual cybersecurity training

## 9. Child Focused Approach

Children need support from adults who care for them: vigilance, understanding and action, stability, respect, information and engagement, explanation and support and advocacy to assist them in putting forward their views (London Safeguarding partnership).

All staff members must:

- recognise that a child who is abused or witnesses violence may feel helpless and humiliated, may blame themselves, and find it difficult to develop and maintain a sense of self-worth;
- recognise that the school may provide the only stability in the lives of children who have been abused or who are at risk of harm; and
- accept that research shows that the behaviour of a child in these circumstances may range from that which is perceived to be normal to aggressive or withdrawn.

### 9.1 Supporting All Children

Beavers Community Primary School will support all children:

- ensuring all members of staff, volunteers, and governors know how to respond to a pupil who discloses abuse;
- ensuring that as soon as a concern with regard to child protection is raised (through disclosure or observation), staff members must liaise with a designated staff member for child protection as soon as a concern arises, without delay. If a designated member of staff is not available, this is never an excuse for delaying on reporting concerns: **anybody can make a referral at any time;**
- making sure that if a staff member has passed on information to a designated staff member and that staff member feels there is a lack of appropriate action or concerns persist, they must pursue the concern(s) themselves. **No action is never an option; anybody can make a referral at any time;**
- teaching them techniques and practices, including support of professionals to help them to recognise risks in a variety of different situations and how to deal with them e.g. through Forest School, school journeys and visits, theatre productions, Junior Citizens agenda etc;
- developing their skills to cope with emergency situations including strategies taught through visits from the London Fire Brigade, Road Safety teams, Safer Neighbourhood Police teams as well as those taught through Junior Citizens and inter school preparation for pupils transferring to Secondary School;

- encouraging self-esteem and self-assertiveness through the curriculum and general school practices including sharing assemblies and in PSHE, Project Achieve, Values and our UNICEF Children's rights agenda, whilst not condoning aggression or bullying;
- promoting a caring, safe and positive environment within the school with staff acting as role models. This is of particular important where pupils are known to have negative experiences at home or in the community;
- liaising and working together in partnership with all other support services and those agencies involved in the safeguarding of children. For example, there are weekly SEND meetings aimed at supporting vulnerable pupils and ensuring that their needs are identified and met in school and/or through outside professionals;
- notifying social care as soon as there is a significant concern: **anybody can make a referral at any time**; and
- providing continuing support to a child about whom there have been concerns and who leaves the school by ensuring that appropriate information is copied under confidential cover to the child's new setting. We will continue to check on ex pupils to ensure that they and their records have arrived safely in their new placement including our army pupils whose families may be stationed abroad.

## 9.2 Prevention

We recognise that the school plays a significant part in the prevention of harm to our children by providing children with good lines of communication with trusted adults, supportive friends and an ethos of protection. Beavers staff at all times are required to act as good role models and to encourage pupils talk about how safe they feel at school.

The school community will therefore:

- Continue to work to maintain an ethos where children feel secure and are encouraged to talk and are always listened to.
- Include regular consultation with children e.g. through safety questionnaires, participation in anti-bullying week, asking children to report whether they have had happy/sad lunchtimes/playtimes
- Ensure that all children know there is an adult in the school whom they can approach if they are worried or in difficulty.
- Include safeguarding across the curriculum, including PSHE, opportunities which equip children with the skills they need to stay safe from harm and to know to whom they should turn for help. In particular this will include anti-bullying work, e-safety, road safety, pedestrian and cycle training. Also focused work in phase groups to prepare for moving up a phase and Year 6 to prepare for transition to Secondary school and more personal safety/independent travel. Year 6 also attend Junior Citizen training from a variety of safeguarding and protection agencies
- Ensure all staff members are aware of school guidance for their use of mobile technology and have discussed safeguarding issues around the use of mobile technologies and their associated risks.

## 9.3 Supporting Staff (Supervision)

At Beavers Community Primary School we recognise that our school is situated in an area classified as having a high percentage of deprivation and staff working in the school who have



become involved with a child who has suffered harm, or appears to be likely to suffer harm, may find the situation stressful and upsetting.

We will support such staff by providing an opportunity to talk through their anxieties with designated staff members and to seek further support/counselling as appropriate.

## 10. Confidentiality

We recognise that all matters relating to child protection are confidential. At Beavers, children's records are kept confidentially in the school office. They are available on request but should not be removed from the office. Sensitive information is kept in the Child Protection folder in the office.

Designated staff members (named above in this policy) will disclose any information about a child to other members of staff on a need to know basis only.

All staff members must be aware that they have a professional responsibility to share information with other agencies in order to safeguard children. Fears about sharing information must not be allowed to stand in the way of the need to promote the welfare, and protect the safety, of children. The Data Protection Act (DPA) 2018 and GDPR do not prevent, or limit, the sharing of information for the purposes of keeping children safe. Timely information sharing is essential to effective safeguarding

If staff are in any doubt about sharing information, they should speak to the designated safeguarding lead (or deputy). All staff members must be aware that they cannot promise a child to keep secrets which might compromise the child's safety or wellbeing.

We will always undertake to share our intention to refer a child to social care with their parents /carers unless to do so could put the child at greater risk of harm, or impede a criminal investigation. If in doubt, we will consult with EHH on this point

If staff need to share 'special category personal data', the DPA 2018 contains 'safeguarding of children and individuals at risk' as a processing condition that allows practitioners to share information without consent if it is not possible to gain consent, it cannot be reasonably expected that a practitioner gains consent, or if to gain consent would place a child at risk

- If a victim asks the school not to tell anyone about the sexual violence or sexual harassment:
  - There's no definitive answer, because even if a victim doesn't consent to sharing information, staff may still lawfully share it if there's another legal basis under the UK GDPR that applies
  - The DSL will have to balance the victim's wishes against their duty to protect the victim and other children
  - The DSL should consider that:
    - Parents or carers should normally be informed (unless this would put the victim at greater risk)



- The basic safeguarding principle is: if a child is at risk of harm, is in immediate danger, or has been harmed, a referral should be made to local authority children's social care
- Rape, assault by penetration and sexual assault are crimes. Where a report of rape, assault by penetration or sexual assault is made, this should be referred to the police. While the age of criminal responsibility is 10, if the alleged perpetrator is under 10, the starting principle of referring to the police remains

Regarding anonymity, all staff will:

- Be aware of anonymity, witness support and the criminal process in general where an allegation of sexual violence or sexual harassment is progressing through the criminal justice system
- Do all they reasonably can to protect the anonymity of any children involved in any report of sexual violence or sexual harassment, for example, carefully considering which staff should know about the report, and any support for children involved
- Consider the potential impact of social media in facilitating the spreading of rumours and exposing victims' identities

The government's [information sharing advice for safeguarding practitioners](#) includes 7 'golden rules' for sharing information, and will support staff who have to make decisions about sharing information

## 11. Recognising abuse and taking action

All staff are expected to be able to identify and recognise all forms of abuse, neglect and exploitation and shall be alert to the potential need for early help for a child who:

- Is disabled
- Has special educational needs (whether or not they have a statutory education health and care (EHC) plan)
- Is a young carer
- Is bereaved
- Is showing signs of being drawn into anti-social or criminal behaviour, including being affected by gangs and county lines and organised crime groups and/or serious violence, including knife crime
- Is frequently missing/goes missing from education, care or home
- Is at risk of modern slavery, trafficking, sexual and/or criminal exploitation
- Is at risk of being radicalised or exploited
- Is viewing problematic and/or inappropriate online content (for example, linked to violence), or developing inappropriate relationships online
- Is in a family circumstance presenting challenges for the child, such as drug and alcohol misuse, adult mental health issues and domestic abuse
- Is misusing drugs or alcohol
- Is suffering from mental ill health
- Has returned home to their family from care
- Is at risk of so-called 'honour'-based abuse such as female genital mutilation (FGM) or forced marriage
- Is a privately fostered child

- Has a parent or carer in custody or is affected by parental offending
- Is missing education, or persistently absent from school, or not in receipt of full-time education
- Has experienced multiple suspensions and is at risk of, or has been permanently excluded

Staff, volunteers and governors must follow the procedures set out below in the event of a safeguarding issue.

Please note – in this and subsequent sections, you should take any references to the DSL to mean “the DSL (or deputy DSL)”.

### 11.1 If a child is in immediate danger

Make a referral to children’s social care and/or the police **immediately** if a child is in immediate danger or at risk of harm. **Anyone can make a referral.**

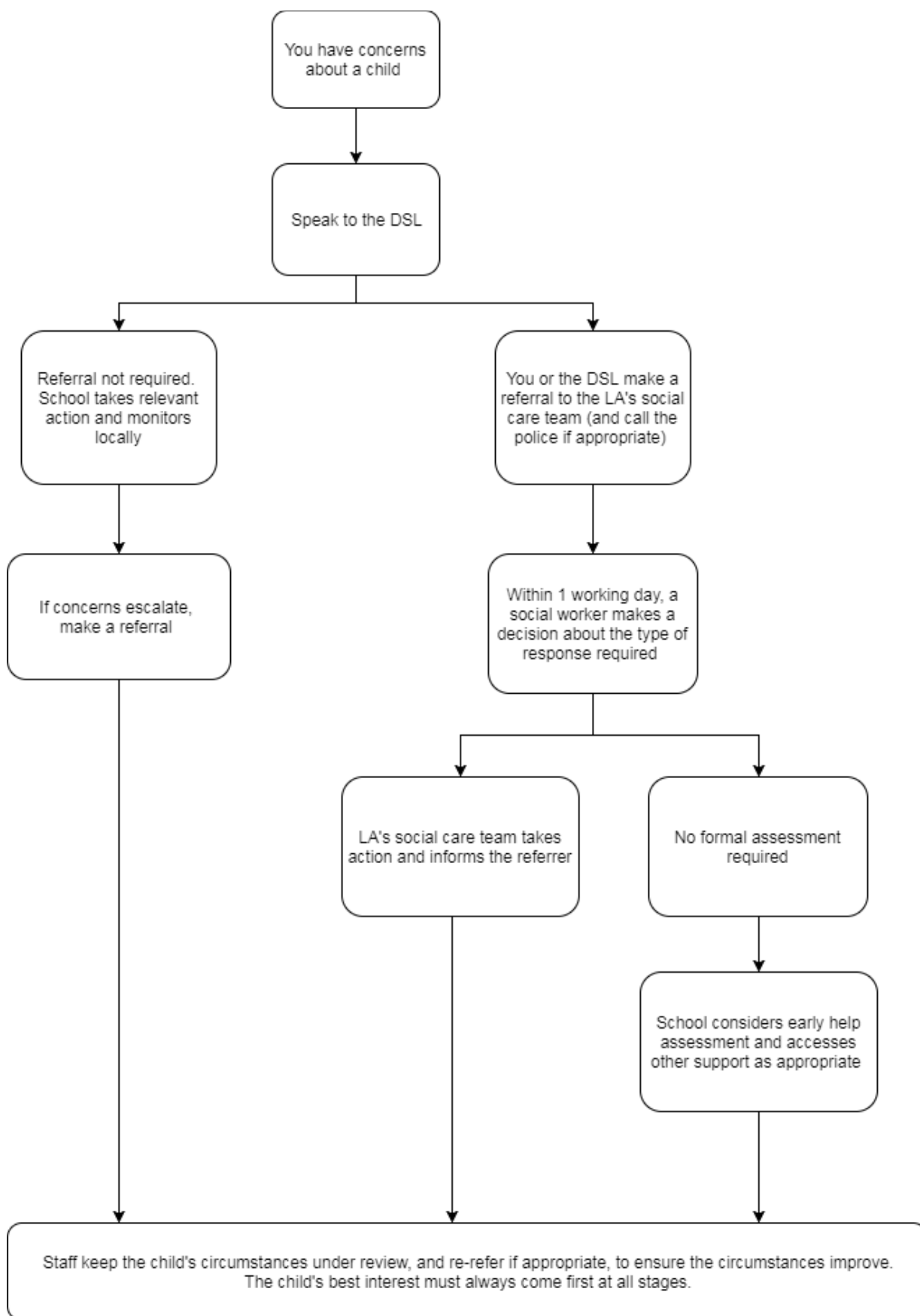
Tell the DSL (see section 5.2) as soon as possible if you make a referral directly.

### 11.2 Making a Referral

- If it is believed that urgent action is needed to protect a child, the police should be contacted on 999.
- Other safeguarding referrals should be made to Early Help in Hounslow ([EHH](#)) via a CFAN form.
- Prior to any written referral to social care, there should be a verbal consultation with the duty social worker or manager, by calling the duty desk on **020 8583 3456 (020 8583 2222, after 5pm weekdays and on weekends)**, to ensure that making a referral is an appropriate action.
- The parent/carer will normally be contacted to obtain their consent before a referral is made. However, if the concern involves, for example alleged or suspected child sexual abuse, honour based violence, fabricated or induced illness or a designated member of staff has reason to believe that informing the parent at this stage might compromise the safety of the child or a staff member, nothing should be said to the parent/carer ahead of the referral, but a rationale for the decision to progress without consent should be provided with the referral.
- In circumstances where a child has an unexplained or suspicious injury that requires urgent medical attention, the CP referral process should not delay the administration of first aid or emergency medical assistance.
- **If a pupil is thought to be at immediate risk because of parental violence, intoxication, substance abuse, mental illness or threats to remove the child during the school day, for example, urgent Police intervention will be requested.**
- Where a child sustains a physical injury or is distressed as a result of reported chastisement, or alleges that they have been chastised by the use of an implement or substance, this will immediately be reported for investigation.
- All parents applying for places at this school will be informed of our safeguarding responsibilities and the existence of this policy. In situations where pupils sustain injury or are otherwise affected by an accident or incident whilst they are the responsibility of the school, parents will be notified of this as soon as possible.

- Beavers Community Primary School recognises the need to be alert to the risks posed by strangers or others (including the parents or carers of other pupils) who may wish to harm children in school or pupils travelling to and from school and will take all reasonable steps to lessen such risks.
- All members of staff, volunteers, and governors must know how to respond to a pupil who discloses abuse.
- As soon as a concern with regard to child protection is raised (through disclosure or observation), staff members must liaise with a designated staff member for child protection as soon as a concern arises, without delay. If a designated member of staff is not available, this is never an excuse for delaying on reporting concerns: **anybody can make a referral at any time;**
- If a staff member has passed on information to a designated staff member and that staff member feels there is a lack of appropriate action or concerns persist, they must pursue the concern(s) themselves. **No action is never an option; anybody can make a referral at any time;**  
[https://www.hounslow.gov.uk/info/20075/child\\_protection/1275/what\\_to\\_do\\_if\\_you\\_are\\_worried\\_about\\_a\\_child](https://www.hounslow.gov.uk/info/20075/child_protection/1275/what_to_do_if_you_are_worried_about_a_child)
- The local authority will make a decision within 1 working day of a referral about what course of action to take and will let the person who made the referral know the outcome. The DSL or person who made the referral must follow up with the local authority if this information is not made available, and ensure outcomes are properly recorded.
- If the child's situation does not seem to be improving after the referral, the DSL or person who made the referral must contact the local authority and make sure the case is reconsidered to ensure the concerns have been addressed and the child's situation improves.
- We will discuss and agree, with statutory safeguarding partners, levels for the different types of assessment, as part of local arrangements.

Figure 1: procedure if you have concerns about a child's welfare (no immediate danger)



### 11.3 If a child makes a disclosure to you

- If a child discloses a safeguarding issue to you, you should:
- Listen to and believe them. Allow them time to talk freely and do not ask leading questions
- Stay calm and do not show that you are shocked or upset
- Tell the child they have done the right thing in telling you. Do not tell them they should have told you sooner
- Explain what will happen next and that you will have to pass this information on. Do not promise to keep it a secret
- Write up your conversation as soon as possible (using concerns form) in the child's own words. Stick to the facts, and do not put your own judgment on it
- Sign and date the write-up and pass it on to the DSL. Alternatively, if appropriate, make a referral to children's social care and/or the police directly, and tell the DSL as soon as possible that you have done so. Aside from these people, do not disclose the information to anyone else unless told to do so by a relevant authority involved in the safeguarding process
- Bear in mind that some children may:
  - Not feel ready, or know how to tell someone that they are being abused, exploited or neglected
  - Not recognise their experiences as harmful
  - Feel embarrassed, humiliated or threatened. This could be due to their vulnerability, disability, sexual orientation and/or language barriers

None of this should stop you from having a 'professional curiosity' and speaking to the DSL if you have concerns about a child.

### 11.4 If you discover that FGM has taken place or a pupil is at risk of FGM

The Department for Education's Keeping Children Safe in Education explains that FGM comprises "all procedures involving partial or total removal of the external female genitalia, or other injury to the female genital organs".

FGM is illegal in the UK and a form of child abuse with long-lasting, harmful consequences. It is also known as 'female genital cutting', 'circumcision' or 'initiation'.

Possible indicators that a pupil has already been subjected to FGM, and factors that suggest a pupil may be at risk, are set out in appendix 4.

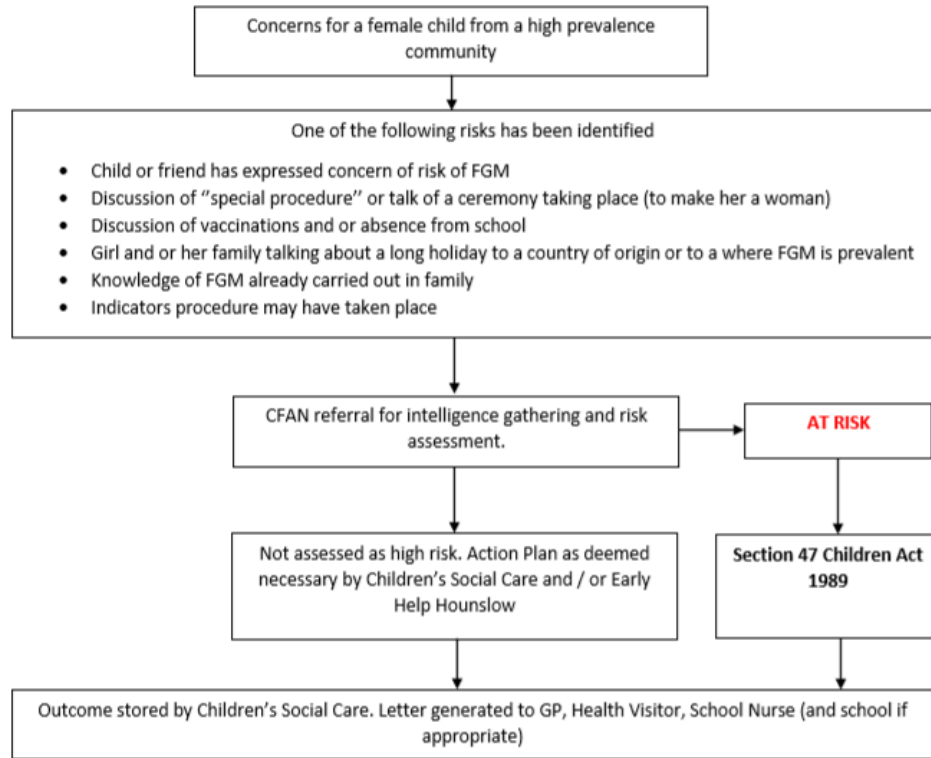
**Any teacher** who discovers that an act of FGM appears to have been carried out on a **pupil under 18** should immediately report this to the police, personally. This is a statutory duty, and teachers will face disciplinary sanctions for failing to meet it.

The duty above does not apply in cases where a pupil is *at risk* of FGM or FGM is suspected but is not known to have been carried out. Staff should not examine pupils.

**Any other member of staff** who discovers that an act of FGM appears to have been carried out on a **pupil under 18** must speak to the DSL and follow our local safeguarding procedures.

**Any member of staff** who suspects a pupil is *at risk* of FGM, must speak to the DSL and follow the Hounslow Safeguarding Procedures as detailed below.

## Hounslow FGM Pathway Childs Context



**In the case of a child at risk of immediate significant harm or removal from the country to allow that significant harm to take place; contact must be made immediately with the Police – by calling 999**

## **If you have concerns about extremism (The Prevent Duty)**

There are 3 key strands to the Prevent Duty in schools

Promoting British Values and tolerance of other religions and cultures through the PSHE programme

- Ensuring children are not able to access inappropriate materials in school and supporting parents to do the same at home
- Reporting any concerns that a child may be vulnerable to radicalisation to the appropriate authority

If a child is not at immediate risk of harm, where possible, speak to the DSL first to agree a course of action. Alternatively, make a referral to local authority children's social care directly if appropriate (see 'Referral' above).

If in exceptional circumstances the DSL is not available, this should not delay appropriate action being taken. Speak to a member of the senior leadership team and/or seek advice from local authority children's social care. Make a referral to local authority children's social care directly, if appropriate (see 'Referral' above). Inform the DSL or deputy as soon as practically possible after the referral.

Where there is a concern, the DSL will consider the level of risk and decide which agency to make a referral to. This could include the police or Channel, the government's programme for identifying and supporting individuals at risk of being involved with or supporting terrorism, or the local authority children's social care team.

The Department for Education also has a dedicated telephone helpline, 020 7340 7264, that school staff and governors can call to raise concerns about extremism with respect to a pupil. You can also email [counter.extremism@education.gov.uk](mailto:counter.extremism@education.gov.uk). Note that this is not for use in emergency situations.

In an emergency, call 999 or the confidential anti-terrorist hotline on 0800 789 321 if you:

- Think someone is in immediate danger
- Think someone may be planning to travel to join an extremist group
- See or hear something that may be terrorist-related

### **Contact details for Prevent in Hounslow**

Email: [Joan Conlon](mailto:Joan.Conlon@hounslow.gov.uk)

Mob: 078 1707 9190

Email: [Najeeb Ahmed](mailto:Najeeb.Ahmed@hounslow.gov.uk)

Mob: 078 9054 0433

Email: [Karmjit Rekhi](mailto:Karmjit.Rekhi@hounslow.gov.uk)

Mob: 079 7672 1119

## 11.5 If you have a mental health concern

Mental health problems can, in some cases, be an indicator that a child has suffered or is at risk of suffering abuse, neglect or exploitation.

Staff will be alert to behavioural signs that suggest a child may be experiencing a mental health problem or be at risk of developing one.

If you have a mental health concern about a child that is also a safeguarding concern, take immediate action by following the steps in section

If you have a mental health concern that is **not** also a safeguarding concern, speak to the DSL to agree a course of action.

### Referral pathway - Mental Health

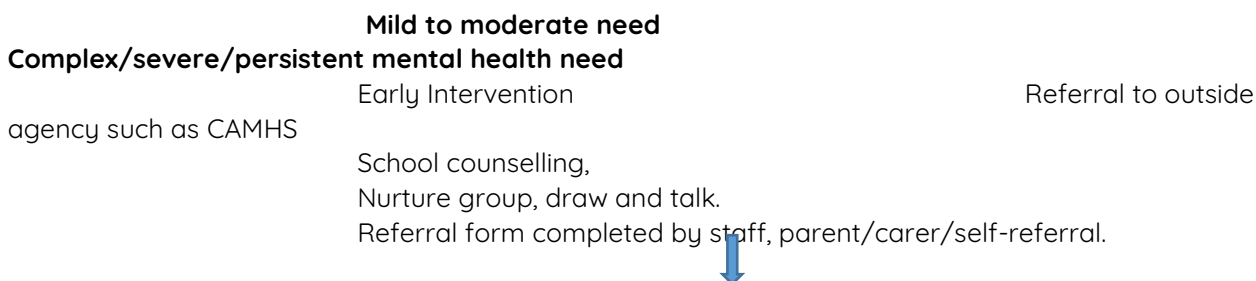
Identification of mental health problem



Findings shared with Senco/Mental Health lead



Action taken dependent on severity, duration and length of problem



All cases to be monitored by Inclusion team and outcomes measured using appropriate tools such as SDQ

## 11.6 Concerns about a staff member or volunteer

If you have concerns about a member of staff (including a supply teacher or volunteer), or volunteer, speak to the headteacher. If you have concerns about the headteacher, speak to the chair of governors.

You can also discuss any concerns about any staff member or volunteer with the DSL.

The headteacher/chair of governors/DSL will then follow the procedures set out in appendix 3, if appropriate.



Where appropriate, the school will inform Ofsted of the allegation and actions taken, within the necessary timescale (see appendix 3 for more detail).

### **11.7 Allegations of abuse made against other pupils**

We recognise that children are capable of abusing their peers. Abuse will never be tolerated or passed off as “banter”, “just having a laugh” or “part of growing up”, as this can lead to a culture of unacceptable behaviours and an unsafe environment for pupils.

We also recognise the gendered nature of child-on-child abuse. However, all child-on-child abuse is unacceptable and will be taken seriously.

Most cases of pupils hurting other pupils will be dealt with under our school’s behaviour policy, but this child protection and safeguarding policy will apply to any allegations that raise safeguarding concerns. This might include where the alleged behaviour:

- Is serious, and potentially a criminal offence
- Could put pupils in the school at risk
- Is violent
- Involves pupils being forced to use drugs or alcohol
- Involves sexual exploitation, sexual abuse or sexual harassment, such as indecent exposure, sexual assault, upskirting or sexually inappropriate pictures or videos (including sexting)

If a pupil makes an allegation of abuse against another pupil:

- You must tell the DSL and record the allegation, but do not investigate it
- The DSL will contact the local authority children’s social care team and follow its advice, as well as the police if the allegation involves a potential criminal offence
- The DSL will put a risk assessment and support plan into place for all children involved – both the victim(s) and the child(ren) against whom the allegation has been made – with a named person they can talk to if needed
- The DSL will contact the children and adolescent mental health services (CAMHS), if appropriate

If the incident is a criminal offence and there are delays in the criminal process, the DSL will work closely with the police (and other agencies as required) while protecting children and/or taking any disciplinary measures against the alleged perpetrator. We will ask the police if we have any questions about the investigation

### **Creating a supportive environment in school and minimising the risk of child-on-child abuse**

We recognise the importance of taking proactive action to minimise the risk of child-on-child abuse, and of creating a supportive environment where victims feel confident in reporting incidents.

To achieve this, we will:

- Challenge any form of derogatory or sexualised language or inappropriate behaviour between peers, including requesting or sending sexual images

- Be vigilant to issues that particularly affect different genders – for example, sexualised or aggressive touching or grabbing towards female pupils, and initiation or hazing type violence with respect to boys
- Ensure our curriculum helps to educate pupils about appropriate behaviour and consent
- Ensure pupils are able to easily and confidently report abuse using our reporting systems (as described in section 7.10 below)
- Ensure staff reassure victims that they are being taken seriously
- Be alert to reports of sexual violence and/or harassment that may point to environmental or systemic problems that could be addressed by updating policies, processes and the curriculum, or could reflect wider issues in the local area that should be shared with safeguarding partners
- Support children who have witnessed sexual violence, especially rape or assault by penetration. We will do all we can to make sure the victim, alleged perpetrator(s) and any witnesses are not bullied or harassed
- Consider intra familial harms and any necessary support for siblings following a report of sexual violence and/or harassment
- Ensure staff are trained to understand:
  - How to recognise the indicators and signs of child-on-child abuse, and know how to identify it and respond to reports
  - That even if there are no reports of child-on-child abuse in school, it does not mean it is not happening – staff should maintain an attitude of “it could happen here”
  - That if they have any concerns about a child’s welfare, they should act on them immediately rather than wait to be told, and that victims may not always make a direct report. For example:

Children can show signs or act in ways they hope adults will notice and react to

A friend may make a report

A member of staff may overhear a conversation

A child’s behaviour might indicate that something is wrong

- That certain children may face additional barriers to telling someone because of their vulnerability, disability, gender, ethnicity and/or sexual orientation
- That a pupil harming a peer could be a sign that the child is being abused themselves, and that this would fall under the scope of this policy
- The important role they have to play in preventing child-on-child abuse and responding where they believe a child may be at risk from it
- That they should speak to the DSL if they have any concerns
- That social media is likely to play a role in the fall-out from any incident or alleged incident, including for potential contact between the victim, alleged perpetrator(s) and friends from either side

The DSL will take the lead role in any disciplining of the alleged perpetrator(s). We will provide support at the same time as taking any disciplinary action.

Disciplinary action can be taken while other investigations are going on, e.g. by the police. The fact that another body is investigating or has investigated an incident doesn’t (in itself) prevent our school from coming to its own conclusion about what happened and imposing a penalty accordingly. We will consider these matters on a case-by-case basis, taking into account whether:

- Taking action would prejudice an investigation and/or subsequent prosecution – we will liaise with the police and/or LA children’s social care to determine this
- There are circumstances that make it unreasonable or irrational for us to reach our own view about what happened while an independent investigation is ongoing

## 11.8 Sharing of nudes and semi-nudes (‘sexting’)

### Your responsibilities when responding to an incident

If you are made aware of an incident involving the consensual or non-consensual sharing of nude or semi-nude images/videos, including pseudo-images, which are computer-generated images that otherwise appear to be a photograph or video (also known as ‘sexting’ or ‘youth produced sexual imagery’), you must report it to the DSL immediately.

You must **not**:

- View, copy, print, share, store or save the imagery yourself, or ask a pupil to share or download it (if you have already viewed the imagery by accident, you must report this to the DSL)
- Delete the imagery or ask the pupil to delete it
- Ask the pupil(s) who are involved in the incident to disclose information regarding the imagery (this is the DSL’s responsibility)
- Share information about the incident with other members of staff, the pupil(s) it involves or their, or other, parents and/or carers
- Say or do anything to blame or shame any young people involved

You should explain that you need to report the incident, and reassure the pupil(s) that they will receive support and help from the DSL.

### Initial review meeting

Following a report of an incident, the DSL will hold an initial review meeting with appropriate school staff – this may include the staff member who reported the incident and the safeguarding or leadership team that deals with safeguarding concerns. This meeting will consider the initial evidence and aim to determine:

- Whether there is an immediate risk to pupil(s)
- If a referral needs to be made to the police and/or children’s social care
- If it is necessary to view the image(s) in order to safeguard the young person (in most cases, images or videos should not be viewed)
- What further information is required to decide on the best response
- Whether the image(s) has been shared widely and via what services and/or platforms (this may be unknown)
- Whether immediate action should be taken to delete or remove images or videos from devices or online services
- Any relevant facts about the pupils involved which would influence risk assessment
- If there is a need to contact another school, college, setting or individual
- Whether to contact parents or carers of the pupils involved (in most cases parents/carers should be involved)

The DSL will make an immediate referral to police and/or children's social care if:

- The incident involves an adult. Where an adult poses as a child to groom or exploit a child or young person, the incident may first present as a child-on-child incident. See appendix 4 for more information on assessing adult-involved incidents
- There is reason to believe that a young person has been coerced, blackmailed or groomed, or if there are concerns about their capacity to consent (for example, owing to SEN)
- What the DSL knows about the images or videos suggests the content depicts sexual acts which are unusual for the young person's developmental stage, or are violent
- The imagery involves sexual acts and any pupil in the images or videos is under 13
- The DSL has reason to believe a pupil is at immediate risk of harm owing to the sharing of nudes and semi-nudes (for example, the young person is presenting as suicidal or self-harming)
- If none of the above apply then the DSL, in consultation with the headteacher and other members of staff as appropriate, may decide to respond to the incident without involving the police or children's social care. The decision will be made and recorded in line with the procedures set out in this policy.

### **Further review by the DSL**

If at the initial review stage a decision has been made not to refer to police and/or children's social care, the DSL will conduct a further review to establish the facts and assess the risks.

They will hold interviews with the pupils involved (if appropriate).

If at any point in the process there is a concern that a pupil has been harmed or is at risk of harm, a referral will be made to children's social care and/or the police immediately.

### **Informing parents/carers**

The DSL will inform parents/carers at an early stage and keep them involved in the process, unless there is a good reason to believe that involving them would put the pupil at risk of harm.

### **Referring to the police**

If it is necessary to refer an incident to the police, this will be done through the community police or safer schools officer

### **Recording incidents**

All incidents of sharing of nudes and semi-nudes, and the decisions made in responding to them, will be recorded. The record-keeping arrangements set out in this policy also apply to recording these incidents.

The headteacher/chair of governors will then follow the procedures set out in appendix 3, if appropriate.

### **Curriculum coverage**

In upper Key Stage 2 Pupils are taught about the issues surrounding sexting as part of our PSHE education and computing programmes. Teaching covers the following in relation to sexting:

- What it is
- How it is most likely to be encountered
- The consequences of requesting, forwarding or providing such images, including when it is and is not abusive
- Issues of legality
- The risk of damage to people's feelings and reputation
- Pupils also learn the strategies and skills needed to manage:
  - Specific requests or pressure to provide (or forward) such images
  - The receipt of such images

Teaching follows best practice in delivering safe and effective education, including:

- Putting safeguarding first
- Approaching from the perspective of the child
- Promoting dialogue and understanding
- Empowering and enabling children and young people
- Never frightening or scare-mongering
- Challenging victim-blaming attitudes

## 11.9 Whistleblowing

Children will raise concerns where the environment is conducive and staff members take these concerns seriously.

All staff members should be aware of their duty to raise concerns, where they exist, about the attitude, actions of colleagues and to raise concerns about poor or unsafe practice in the school's safeguarding regime.

The school follow the Hounslow Local Authority whistle blowing policy.

Where a member of staff feels unable to raise their concern or feels that their concerns have not been properly addressed, they can contact the NSPCC Whistleblowing Helpline 0800 028 0285. Details of which are also on the safeguarding page on the school website

## Physical Contact

Safeguarding pupils requires both pupils and staff to be clear about safe and acceptable physical contact. However, it is just as important for all staff and volunteers to feel comfortable in contributing to providing a safe and caring environment for all pupils, especially for very young children. Staff and volunteers need to feel comfortable in responding to pupils' practical and emotional needs.

Reasonable force is sometimes appropriate and a 'no contact' policy can leave staff unable to fully support and protect their pupils. The decision to use reasonable force to control or restrain a child is down to the professional judgement of the staff concerned and should always depend on individual circumstances

If a child is known to at times to show challenging behaviours which may result in the need for restraint, then an individual plan needs to be considered and written, which identifies the possible triggers and minimises the likelihood of these behaviours. It should also identify alternative ways of dealing with it, should it occur, so that there is less use of physical restraint.

It is important to avoid making assumptions about whether or not a pupil wants physical

contact, even with very young children, or to assume that one response fits all circumstances. Members of staff should use their professional judgement in specific situations, taking into account the pupil's needs at the time, their age, stage of development, gender, ethnicity and background.

If a member of staff believes that an incident could be misinterpreted, they should inform the designated safeguarding lead immediately.

For further information, refer to the school's Behaviour Policy.

## 12. Notifying parents or carers

- Where appropriate, we will discuss any concerns about a child with the child's parents or carers. The DSL will normally do this in the event of a suspicion or disclosure.
- Other staff will only talk to parents or carers about any such concerns following consultation with the DSL.
- If we believe that notifying the parents or carers would increase the risk to the child, we will discuss this with the local authority children's social care team before doing so.
- In the case of allegations of abuse made against other children, we will normally notify the parents or carers of all the children involved. We will think carefully about what information we provide about the other child involved, and when. We will work with the police and/or local authority children's social care to make sure our approach to information sharing is consistent.
- The DSL will, along with any relevant agencies (this will be decided on a case-by-case basis):
  - Meet with the victim's parents or carers, with the victim, to discuss what's being put in place to safeguard them, and understand their wishes in terms of what support they may need and how the report will be progressed
  - Meet with the alleged perpetrator's parents or carers to discuss support for them, and what's being put in place that will impact them, e.g. moving them out of classes with the victim, and the reason(s) behind any decision(s)

## 13. Pupils with Special Educational Needs and disabilities

We recognise that pupils with SEND or certain health conditions can face additional safeguarding challenges. Children with disabilities are more likely to be abused than their peers. Additional barriers can exist when recognising abuse, exploitation and neglect in this group, including:

- Assumptions that indicators of possible abuse such as behaviour, mood and injury relate to the child's disability without further exploration
- Pupils being more prone to peer group isolation or bullying (including prejudice-based bullying) than other pupils
- The potential for pupils with SEN and disabilities or certain health conditions being disproportionately impacted by behaviours such as bullying, without outwardly showing any signs

- Communication barriers and difficulties in overcoming these barriers
- Cognitive understanding – being unable to understand the differences between fact and fiction in online content and then repeating the content/behaviours in school or the consequences of doing so.

We offer extra pastoral support for these pupils. This includes:

- Weekly Well being check ins with school counsellor
- Nurture group interventions
- 1:1 Counselling sessions
- Mentoring/coaching sessions (offered by Transforming Lives for Good)

Any abuse involving pupils with SEND will require close liaison with the DSL (or deputy) and the SENCO.

## 14. Pupils with a social worker

Pupils may need a social worker due to safeguarding or welfare needs. We recognise that a child's experiences of adversity and trauma can leave them vulnerable to further harm as well as potentially creating barriers to attendance, learning, behaviour and mental health.

The DSL and all members of staff will work with and support social workers to help protect vulnerable children.

Where we are aware that a pupil has a social worker, the DSL will always consider this fact to ensure any decisions are made in the best interests of the pupil's safety, welfare and educational outcomes. For example, it will inform decisions about:

- Responding to unauthorised absence or missing education where there are known safeguarding risks

The provision of pastoral and/or academic support

## 15. Looked-after and previously looked after children

We will ensure that staff have the skills, knowledge and understanding to keep looked-after children and previously looked-after children safe. In particular, we will ensure that:

Appropriate staff have relevant information about children's looked after legal status, contact arrangements with birth parents or those with parental responsibility, and care arrangements

- The DSL has details of children's social workers and relevant virtual school heads

We have appointed a designated teacher, Neerja Kapoor who is responsible for promoting the educational achievement of looked-after children and previously looked-after children in line with [statutory guidance](#).

The designated teacher is appropriately trained and has the relevant qualifications and experience to perform the role.

As part of their role, the designated teacher will:

- Work closely with the DSL to ensure that any safeguarding concerns regarding looked-after and previously looked-after children are quickly and effectively responded to
- Work with virtual school heads to promote the educational achievement of looked-after and previously looked-after children, including discussing how pupil premium plus funding can be best used to support looked-after children and meet the needs identified in their personal education plans

## 16. Pupils who are gender questioning

We recognise that pupils who are (or who are perceived to be) lesbian, gay, bisexual or gender questioning (LGBTQ+) can be targeted by other children.

We also recognise that LGBTQ+ children are more likely to experience poor mental health. Any concerns should be reported to the DSL

When families/carers are making decisions about support for gender questioning pupils, they should be encouraged to seek clinical help and advice. This should be done as early as possible when supporting pre-pubertal children.

When supporting a gender questioning pupil, we will take a cautious approach as there are still unknowns around the impact of social transition, and a pupil may have wider vulnerability, such as complex mental health and psychosocial needs, and in some cases, autism spectrum disorder (ASD) and/or attention deficit hyperactivity disorder (ADHD).

We will also consider the broad range of their individual needs, in partnership with their parents/carers (other than in rare circumstances where involving parents/carers would constitute a significant risk of harm to the pupil). We will also include any clinical advice that is available and consider how to address wider vulnerabilities such as the risk of bullying.

Risks can be compounded where children lack trusted adults with whom they can be open. We therefore aim to reduce the additional barriers faced and create a culture where pupils can speak out or share their concerns with members of staff.

## 17. Record Keeping

We will hold records in line with our records retention schedule.

All safeguarding concerns, discussions, decisions made and the rationale for those decisions, must be recorded in writing. This should include instances where referrals were or were not made to another agency such as local authority children's social care or the Prevent programme, etc. If you are in any doubt about whether to record something, discuss it with the DSL.

Records will include:

- A clear and comprehensive summary of the concern
- Details of how the concern was followed up and resolved
- A note of any action taken, decisions reached and the outcome
- Concerns and referrals will be kept in a separate child protection file for each child.



- All safeguarding concerns, discussions, decisions made and the reasons for those decisions, must be recorded in writing. If you are in any doubt about whether to record something, discuss it with the DSL.
- Non-confidential records will be easily accessible and available. Confidential information and records will be held securely and only available to those who have a right or professional need to see them.
- Safeguarding records relating to individual children will be forwarded on to their next educational placement when they leave the school.
- The school uses the CPOMS system with secure access available to the Senior Leadership team, DSL, Deputy DSL and the Children protection officer. Heads of Year are able to record concerns using CPOMS. This is an electronic record keeping system that ensures records are held securely and confidentially.
- Records can be printed and shared on a need to know basis and in line with Hounslow Safeguarding Children's Partnership.
- Safeguarding records relating to individual children will be retained for a reasonable period of time after they have left the school.
- Safeguarding records which contain information about allegations of sexual abuse will be retained for the Independent Inquiry into Child Sexual Abuse (IICSA), for the term of the inquiry.
- If a child for whom the school has, or has had, safeguarding concerns moves to another school, the DSL will ensure that their child protection file is forwarded as soon as possible, securely, and separately from the main pupil file.
- To allow the new school/college to have support in place when the child arrives, this should be within:

**5 days** for an in-year transfer, or within

**The first 5 days** of the start of a new term

In addition, if the concerns are significant or complex, and/or social services are involved, the DSL will speak to the DSL of the receiving school and provide information to enable them to have time to make any necessary preparations to ensure the safety of the child.

In addition:

- Appendix 2 sets out our policy on record-keeping specifically with respect to recruitment and pre-employment checks
- Appendix 4 sets out our policy on record-keeping with respect to allegations of abuse made against staff

## 18. Training

All staff members will undertake safeguarding and child protection training at induction, including on whistle-blowing procedures and online safety, to ensure they understand the school's safeguarding systems and their responsibilities, and can identify signs of possible abuse, exploitation or neglect.

This training will be regularly updated and will:

- Be integrated, aligned and considered as part of the whole-school safeguarding approach and wider staff training, and curriculum planning

- Be in line with advice from the 3 safeguarding partners
- Have regard to the Teachers' Standards to support the expectation that all teachers:
  - Manage behaviour effectively to ensure a good and safe environment
  - Have a clear understanding of the needs of all pupils

All staff will have training on the government's anti-radicalisation strategy, Prevent, to enable them to identify children at risk of becoming involved with or supporting terrorism and to challenge extremist ideas.

Staff will also receive regular safeguarding and child protection updates, including online safety (for example, through emails, e-bulletins and staff meetings) as required, but at least annually. Volunteers will receive appropriate training, if applicable.

The DSL, Deputy DSL and Children Protection Officer will undertake child protection and safeguarding training at least every 2 years.

- All governors receive training about safeguarding and child protection (including online safety) at induction, which is regularly updated. This is to make sure that they:
  - Have the knowledge and information needed to perform their functions and understand their responsibilities, such as providing strategic challenge
  - Can be assured that safeguarding policies and procedures are effective and support the school to deliver a robust whole-school approach to safeguarding

As the chair of governors may be required to act as the 'case manager' in the event that an allegation of abuse is made against the headteacher, they receive training in managing allegations for this purpose

At least one person conducting any interview for a post at the school will have undertaken safer recruitment training. This will cover, as a minimum, the contents of the Department for Education's statutory guidance, Keeping Children Safe in Education, and will be in line with local safeguarding procedures.

All staff who have contact with children and families will have supervisions which will provide them with support, coaching and training, promote the interests of children and allow for confidential discussions of sensitive issues.

## 19. Safer Recruitment

### Recruitment and selection process

To make sure we recruit suitable people, we will ensure that those involved in the recruitment and employment of staff to work with children have received appropriate safer recruitment training.

We have put the following steps in place during our recruitment and selection process to ensure we are committed to safeguarding and promoting the welfare of children.

### Advertising

When advertising roles, we will make clear:

- Our school's commitment to safeguarding and promoting the welfare of children
- That safeguarding checks will be undertaken

- The safeguarding requirements and responsibilities of the role, such as the extent to which the role will involve contact with children
- Whether or not the role is exempt from the Rehabilitation of Offenders Act 1974 and the amendments to the Exceptions Order 1975, 2013 and 2020. If the role is exempt, certain spent convictions and cautions are 'protected', so they do not need to be disclosed, and if they are disclosed, we cannot take them into account

## **Application forms**

Our application forms will:

- Include a statement saying that it is an offence to apply for the role if an applicant is barred from engaging in regulated activity relevant to children (where the role involves this type of regulated activity)
- Include a copy of, or link to, our child protection and safeguarding policy and our policy on the employment of ex-offenders

## **Shortlisting**

Our shortlisting process will involve at least 2 people and will:

- Consider any inconsistencies and look for gaps in employment and reasons given for them
- Explore all potential concerns
- Once we have shortlisted candidates, we will ask shortlisted candidates to:
- Complete a self-declaration of their criminal record or any information that would make them unsuitable to work with children, so that they have the opportunity to share relevant information and discuss it at interview stage. The information we will ask for includes:
  - If they have a criminal history
  - Whether they are included on the barred list
  - Whether they are prohibited from teaching
  - Information about any criminal offences committed in any country in line with the law as applicable in England and Wales
  - Any relevant overseas information
  - Sign a declaration confirming the information they have provided is true

We will also consider carrying out an online search on shortlisted candidates to help identify any incidents or issues that are publicly available online

## **Seeking references and checking employment history**

We will obtain references before interview. Any concerns raised will be explored further with referees and taken up with the candidate at interview.

When seeking references we will:

- Not accept open references
- Liaise directly with referees and verify any information contained within references with the referees
- Ensure any references are from the candidate's current employer and completed by a senior person. Where the referee is school based, we will ask for the reference to be

confirmed by the headteacher/principal as accurate in respect to disciplinary investigations

- Obtain verification of the candidate's most recent relevant period of employment if they are not currently employed
- Secure a reference from the relevant employer from the last time the candidate worked with children if they are not currently working with children
- Compare the information on the application form with that in the reference and take up any inconsistencies with the candidate
- Resolve any concerns before any appointment is confirmed

## **Interview and selection**

When interviewing candidates, we will:

- Probe any gaps in employment, or where the candidate has changed employment or location frequently, and ask candidates to explain this
- Explore any potential areas of concern to determine the candidate's suitability to work with children
- Record all information considered and decisions made

## **Pre-appointment vetting checks**

We will record all information on the checks carried out in the school's single central record (SCR). Copies of these checks, where appropriate, will be held in individuals' personnel files. We follow requirements and best practice in retaining copies of these checks, as set out below.

### **New staff**

All offers of appointment will be conditional until satisfactory completion of the necessary pre-employment checks. When appointing new staff, we will:

- Verify their identity
- Obtain (via the applicant) an enhanced DBS certificate, including barred list information for those who will be engaging in regulated activity (see definition below). We will obtain the certificate before, or as soon as practicable after, appointment, including when using the DBS update service. We will not keep a copy of the certificate for longer than 6 months, but when the copy is destroyed we may still keep a record of the fact that vetting took place, the result of the check and recruitment decision taken
- Obtain a separate barred list check if they will start work in regulated activity before the DBS certificate is available
- Verify their mental and physical fitness to carry out their work responsibilities
- Verify their right to work in the UK. We will keep a copy of this verification for the duration of the member of staff's employment and for 2 years afterwards
- Verify their professional qualifications, as appropriate
- Ensure they are not subject to a prohibition order if they are employed to be a teacher
- Carry out further additional checks, as appropriate, on candidates who have lived or worked outside of the UK. These could include, Where available:
  - For all staff, including teaching positions: criminal records checks for overseas applicants
  - For teaching positions: obtaining a letter from the professional regulating authority in the country where the applicant has worked, confirming that they have not imposed

any sanctions or restrictions on that person, and/or are aware of any reason why that person may be unsuitable to teach

We will ensure that appropriate checks are carried out to ensure that individuals are not disqualified under the 2018 Childcare Disqualification Regulations and Childcare Act 2006. Where we take a decision that an individual falls outside of the scope of these regulations and we do not carry out such checks, we will retain a record of our assessment on the individual's personnel file. This will include our evaluation of any risks and control measures put in place, and any advice sought.

**Regulated activity** means a person who will be:

- Responsible, on a regular basis in a school or college, for teaching, training, instructing, caring for or supervising children; or
- Carrying out paid, or unsupervised unpaid, work regularly in a school or college where that work provides an opportunity for contact with children; or
- Engaging in intimate or personal care or overnight activity, even if this happens only once and regardless of whether they are supervised or not

## 18.2 Existing staff

If we have concerns about an existing member of staff's suitability to work with children, we will carry out all the relevant checks as if the individual was a new member of staff. We will also do this if an individual moves from a post that is not regulated activity to one that is.

We will refer to the DBS anyone who has harmed, or poses a risk of harm, to a child or vulnerable adult where:

- We believe the individual has engaged in relevant conduct; or
- The individual has received a caution or conviction for a relevant offence, or there is reason to believe the individual has committed a listed relevant offence, under the Safeguarding Vulnerable Groups Act 2006 (Prescribed Criteria and Miscellaneous Provisions) Regulations 2009; or
- The 'harm test' is satisfied in respect of the individual (i.e. they may harm a child or vulnerable adult or put them at risk of harm); and
- The individual has been removed from working in regulated activity (paid or unpaid) or would have been removed if they had not left

## 18.3 Agency and third-party staff

- We will obtain written notification from any agency or third-party organisation that it has carried out the necessary safer recruitment checks that we would otherwise perform. We will also check that the person presenting themselves for work is the same person on whom the checks have been made.

## 18.4 Contractors

We will ensure that any contractor, or any employee of the contractor, who is to work at the school has had the appropriate level of DBS check (this includes contractors who are provided through a PFI or similar contract). This will be:

- An enhanced DBS check with barred list information for contractors engaging in regulated activity
- An enhanced DBS check, not including barred list information, for all other contractors who are not in regulated activity but whose work provides them with an opportunity for regular contact with children
- We will obtain the DBS check for self-employed contractors.
- We will not keep copies of such checks for longer than 6 months.
- Contractors who have not had any checks will not be allowed to work unsupervised or engage in regulated activity under any circumstances.
- We will check the identity of all contractors and their staff on arrival at the school.
- For self-employed contractors such as music teachers or sports coaches, we will ensure that appropriate checks are carried out to ensure that individuals are not disqualified under the 2018 Childcare Disqualification Regulations and Childcare Act 2006. Where we decide that an individual falls outside of the scope of these regulations and we do not carry out such checks, we will retain a record of our assessment. This will include our evaluation of any risks and control measures put in place, and any advice sought.

## 18.5 Trainee/student teachers

- Where applicants for initial teacher training are salaried by us, we will ensure that all necessary checks are carried out.
- Where trainee teachers are fee-funded, we will obtain written confirmation from the training provider that necessary checks have been carried out and that the trainee has been judged by the provider to be suitable to work with children.
- In both cases, this includes checks to ensure that individuals are not disqualified under the 2018 Childcare Disqualification Regulations and Childcare Act 2006.

## 18.6 Volunteers

We will:

- Never leave an unchecked volunteer unsupervised or allow them to work in regulated activity
- Obtain an enhanced DBS check with barred list information for all volunteers who are new to working in regulated activity
- Carry out a risk assessment when deciding whether to seek an enhanced DBS check without barred list information for any volunteers not engaging in regulated activity. We will retain a record of this risk assessment
- Ensure that appropriate checks are carried out to ensure that individuals are not disqualified under the 2018 Childcare Disqualification Regulations and Childcare Act 2006. Where we decide that an individual falls outside of the scope of these regulations and we do not carry out such checks, we will retain a record of our assessment. This will include our evaluation of any risks and control measures put in place, and any advice sought

## 18.7 Governors

- All governors will have an enhanced DBS check without barred list information.
- They will have an enhanced DBS check with barred list information if working in regulated activity.

All governors will also have the following checks:

- Identity
- Right to work in the UK
- Other checks deemed necessary if they have lived or worked outside the UKA

### **Staff working in alternative provision settings**

Where we place a pupil with an alternative provision provider, we obtain written confirmation from the provider that they have carried out the appropriate safeguarding checks on individuals working there that we would otherwise perform.

### **Adults who supervise pupils on work experience**

When organising work experience, we will ensure that policies and procedures are in place to protect children from harm.

We will also consider whether it is necessary for barred list checks to be carried out on the individuals who supervise a pupil under 16 on work experience. This will depend on the specific circumstances of the work experience, including the nature of the supervision, the frequency of the activity being supervised, and whether the work is regulated activity

## 20. Link with other policies and practices

### **Anti-Bullying**

Beavers Community Primary School's policy on anti-bullying is in our Behaviour Policy and acknowledges that to allow or condone bullying may lead to consideration under child protection procedures. This includes all forms e.g. cyber, racist, homophobic and gender related bullying.

### **Racist Incidents**

Our procedures on racist incidents are set out separately, and acknowledge that repeated racist incidents or a single serious incident may lead to consideration under child protection procedures. We keep a record of any racist incidents.

### **Health and Safety**

Our Health & Safety policy, set out in a separate document, reflects the consideration we give to the protection of our children both physically within the school environment, and links for example to safe internet use, and when away from the school and when undertaking school trips and visits.

### **Policies/Procedures with Direct Links to this Policy**

- Behaviour
- Staff Code of Conduct

- Hounslow Whistleblowing Policy
- Health & Safety
- Complaints policy
- Attendance
- PSHE
- Teaching and Learning (and associate policies)
- Supporting children with medical conditions
- Sex and Relationships Education
- Acceptable use policy
- ICT and computing
- Safer Recruitment process
- 

## Monitoring arrangements

This policy will be reviewed **annually** by Designated Safeguarding Lead. At every review, it will be approved by the full governing board.

### Signed by:

Chair of Governors: \_\_\_\_\_ Date: 3<sup>rd</sup> October 2024

Headteacher: \_\_\_\_\_ Date: 3<sup>rd</sup> October 2024

Agreed at the Governing Body Meeting on: 3<sup>rd</sup> October 2024

**These appendices are based on the Department for Education's statutory guidance, Keeping Children Safe in Education.**



## Appendix 1 – Types of Abuse

Abuse, including neglect, and safeguarding issues are rarely standalone events that can be covered by one definition or label. In most cases, multiple issues will overlap.

**Physical abuse** may involve hitting, shaking, throwing, poisoning, burning or scalding, drowning, suffocating or otherwise causing physical harm to a child. Physical harm may also be caused when a parent or carer fabricates the symptoms of, or deliberately induces, illness in a child.

**Emotional abuse** is the persistent emotional maltreatment of a child such as to cause severe and adverse effects on the child's emotional development. Some level of emotional abuse is involved in all types of maltreatment of a child, although it may occur alone.

Emotional abuse may involve:

- Conveying to a child that they are worthless or unloved, inadequate, or valued only insofar as they meet the needs of another person
- Not giving the child opportunities to express their views, deliberately silencing them or 'making fun' of what they say or how they communicate
- Age or developmentally inappropriate expectations being imposed on children. These may include interactions that are beyond a child's developmental capability, as well as overprotection and limitation of exploration and learning, or preventing the child participating in normal social interaction
- Seeing or hearing the ill-treatment of another
- Serious bullying (including cyberbullying), causing children frequently to feel frightened or in danger, or the exploitation or corruption of children

**Sexual abuse** involves forcing or enticing a child or young person to take part in sexual activities, not necessarily involving a high level of violence, whether or not the child is aware of what is happening. The activities may involve:

- Physical contact, including assault by penetration (for example rape or oral sex) or non-penetrative acts such as masturbation, kissing, rubbing and touching outside of clothing
- Non-contact activities, such as involving children in looking at, or in the production of, sexual images, watching sexual activities, encouraging children to behave in sexually inappropriate ways, or grooming a child in preparation for abuse (including via the internet)

Sexual abuse is not solely perpetrated by adult males. Women can also commit acts of sexual abuse, as can other children.

**Neglect** is the persistent failure to meet a child's basic physical and/or psychological needs, likely to result in the serious impairment of the child's health or development. Neglect may occur during pregnancy as a result of maternal substance abuse.

Once a child is born, neglect may involve a parent or carer failing to:

- Provide adequate food, clothing and shelter (including exclusion from home or abandonment)
- Protect a child from physical and emotional harm or danger
- Ensure adequate supervision (including the use of inadequate care-givers)
- Ensure access to appropriate medical care or treatment

It may also include neglect of, or unresponsiveness to, a child's basic emotional needs.

## Appendix 2 – Allegations of abuse against members of staff

### Allegations against staff (including low-level concerns) policy

#### Section 1: allegations that may meet the harms threshold

This section of this policy applies to all cases in which it is alleged that a current member of staff, including a supply teacher, volunteer or contractor, has:

- Behaved in a way that has harmed a child, or may have harmed a child, or
- Possibly committed a criminal offence against or related to a child, or
- Behaved towards a child or children in a way that indicates he or she would pose a risk of harm to children
- Behaved or may have behaved in a way that indicates they may not be suitable to work with children – this includes behaviour taking place both inside and outside school.

If we're in any doubt as to whether a concern meets the harm threshold, we will consult our local authority designated officer (LADO).

We will deal with any allegation of abuse against a member of staff or volunteer very quickly, in a fair and consistent way that provides effective child protection while also supporting the individual who is the subject of the allegation.

A 'case manager' will lead any investigation. This will be the headteacher, or the chair of governors. Where the headteacher is the subject of the allegation. The case manager will be identified at the earliest opportunity.

Our procedures for dealing with allegations will be applied with common sense and judgement.

#### **Suspension of the accused until the case has resolved**

Suspension will not be the default position, and will only be considered in cases where there is reason to suspect that a child or other children is/are at risk of harm, or the case is so serious that it might be grounds for dismissal. In such cases, we will only suspend an individual if we have considered all other options available and there is no reasonable alternative.

Based on an assessment of risk, we will consider alternatives such as:

- Redeployment within the school so that the individual does not have direct contact with the child or children concerned
- Providing an assistant to be present when the individual has contact with children
- Redeploying the individual to alternative work in the school so that they do not have unsupervised access to children
- Moving the child or children to classes where they will not come into contact with the individual, making it clear that this is not a punishment and parents have been consulted
- Temporarily redeploying the individual to another role in a different location, for example to an alternative school or other work for the local authority

If in doubt, the case manager will seek views from the school's personnel adviser and the designated officer at the local authority, as well as the police and children's social care where they have been involved.

## Definitions for outcomes of allegation investigations

- **Substantiated:** there is sufficient evidence to prove the allegation
- **Malicious:** there is sufficient evidence to disprove the allegation and there has been a deliberate act to deceive, or to cause harm to the subject of the allegation
- **False:** there is sufficient evidence to disprove the allegation
- **Unsubstantiated:** there is insufficient evidence to either prove or disprove the allegation (this does not imply guilt or innocence)

## Procedure for dealing with allegations

In the event of an allegation that meets the criteria above, the headteacher (or chair of governors where the headteacher is the subject of the allegation) – the ‘case manager’ – will take the following steps:

- Conduct basic enquiries in line with local procedures to establish the facts to help determine whether there is any foundation to the allegation before carrying on with the steps below
- Discuss the allegation with the designated officer at the local authority. This is to consider the nature, content and context of the allegation and agree a course of action, including whether further enquiries are necessary to enable a decision on how to proceed, and whether it is necessary to involve the police and/or children’s social care services. (The case manager may, on occasion, consider it necessary to involve the police *before* consulting the designated officer – for example, if the accused individual is deemed to be an immediate risk to children or there is evidence of a possible criminal offence. In such cases, the case manager will notify the designated officer as soon as practicably possible after contacting the police)
- Inform the accused individual of the concerns or allegations and likely course of action as soon as possible after speaking to the designated officer (and the police or children’s social care services, where necessary). Where the police and/or children’s social care services are involved, the case manager will only share such information with the individual as has been agreed with those agencies
- Where appropriate (in the circumstances described above), carefully consider whether suspension of the individual from contact with children at the school is justified or whether alternative arrangements such as those outlined above can be put in place. Advice will be sought from the designated officer, police and/or children’s social care services, as appropriate
- Where the case manager is concerned about the welfare of other children in the community or the individual’s family, they will discuss these concerns with the DSL and make a risk assessment of the situation. If necessary, the DSL may make a referral to children’s social care
- **If immediate suspension is considered necessary**, agree and record the rationale for this with the designated officer. The record will include information about the alternatives to suspension that have been considered, and why they were rejected. Written confirmation of the suspension will be provided to the individual facing the allegation or concern within 1 working day, and the individual will be given a named contact at the school and their contact details

- **If it is decided that no further action is to be taken** in regard to the subject of the allegation or concern, record this decision and the justification for it and agree with the designated officer what information should be put in writing to the individual and by whom, as well as what action should follow both in respect of the individual and those who made the initial allegation
- **If it is decided that further action is needed**, take steps as agreed with the designated officer to initiate the appropriate action in school and/or liaise with the police and/or children's social care services as appropriate
- Provide effective support for the individual facing the allegation or concern, including appointing a named representative to keep them informed of the progress of the case and consider what other support is appropriate.
- Inform the parents or carers of the child/children involved about the allegation as soon as possible if they do not already know (following agreement with children's social care services and/or the police, if applicable). The case manager will also inform the parents or carers of the requirement to maintain confidentiality about any allegations made against teachers (where this applies) while investigations are ongoing. Any parent or carer who wishes to have the confidentiality restrictions removed in respect of a teacher will be advised to seek legal advice
- Keep the parents or carers of the child/children involved informed of the progress of the case and the outcome, where there is not a criminal prosecution, including the outcome of any disciplinary process (in confidence)
- Make a referral to the DBS where it is thought that the individual facing the allegation or concern has engaged in conduct that harmed or is likely to harm a child, or if the individual otherwise poses a risk of harm to a child
- If the school is made aware that the secretary of state has made an interim prohibition order in respect of an individual, we will immediately suspend that individual from teaching, pending the findings of the investigation by the National College for Teaching and Leadership.
- Where the police are involved, wherever possible the school will ask the police at the start of the investigation to obtain consent from the individuals involved to share their statements and evidence for use in the school's disciplinary process, should this be required at a later point.

## **Additional considerations for supply staff and contracted staff**

If there are concerns or an allegation is made against someone not directly employed by the school, such as supply staff provided by an agency, we will take the actions below in addition to our standard procedures.

- We will not decide to stop using an individual due to safeguarding concerns without finding out the facts and liaising with our local authority designated officer (LADO) to determine a suitable outcome
- The governing board will discuss with the agency whether it is appropriate to suspend the individual, or redeploy them to another part of the school, while the school carries out the investigation
- We will involve the agency fully, but the school will take the lead in collecting the necessary information and providing it to the LADO as required

- We will address issues such as information sharing, to ensure any previous concerns or allegations known to the agency are taken into account (we will do this, for example, as part of the allegations management meeting or by liaising directly with the agency where necessary)

When using an agency, we will inform them of our process for managing allegations, and keep them updated about our policies as necessary, and will invite the agency's HR manager or equivalent to meetings as appropriate.

### **Timescales**

We will deal with all allegations as quickly and effectively as possible and will endeavour to comply with the following timescales, where reasonably practicable:

- Any cases where it is clear immediately that the allegation is unsubstantiated or malicious will be resolved within 1 week
- If the nature of an allegation does not require formal disciplinary action, we will institute appropriate action within 3 working days
- If a disciplinary hearing is required and can be held without further investigation, we will hold this within 15 working days

However, these are objectives only and where they are not met, we will endeavour to take the required action as soon as possible thereafter.

### **Specific actions**

#### **Action following a criminal investigation or prosecution**

The case manager will discuss with the local authority's designated officer whether any further action, including disciplinary action, is appropriate and, if so, how to proceed, taking into account information provided by the police and/or children's social care services.

#### **Conclusion of a case where the allegation is substantiated**

If the allegation is substantiated and the individual is dismissed or the school ceases to use their services, or the individual resigns or otherwise ceases to provide their services, the school will make a referral to the DBS for consideration of whether inclusion on the barred lists is required.

If the individual concerned is a member of teaching staff, the school will consider whether to refer the matter to the Teaching Regulation Agency to consider prohibiting the individual from teaching.

#### **Individuals returning to work after suspension**

If it is decided on the conclusion of a case that an individual who has been suspended can return to work, the case manager will consider how best to facilitate this.

The case manager will also consider how best to manage the individual's contact with the child or children who made the allegation, if they are still attending the school.

#### **Unsubstantiated, unfounded, false or malicious reports**

If a report is:

- Determined to be unsubstantiated, unfounded, false or malicious, the DSL will consider the appropriate next steps. If they consider that the child and/or person who made the

allegation is in need of help, or the allegation may have been a cry for help, a referral to children's social care may be appropriate

- Shown to be deliberately invented, or malicious, the school will consider whether any disciplinary action is appropriate against the individual(s) who made it

### **Unsubstantiated or malicious allegations**

If an allegation is:

- Determined to be unsubstantiated, unfounded, false or malicious, the LADO and case manager will consider the appropriate next steps. If they consider that the child and/or person who made the allegation is in need of help, or the allegation may have been a cry for help, a referral to children's social care may be appropriate
- Shown to be deliberately invented, or malicious, the school will consider whether any disciplinary action is appropriate against the individual(s) who made it

### **Confidentiality**

The school will make every effort to maintain confidentiality and guard against unwanted publicity while an allegation is being investigated or considered.

The case manager will take advice from the local authority's designated officer, police and children's social care services, as appropriate, to agree:

- Who needs to know about the allegation and what information can be shared
- How to manage speculation, leaks and gossip, including how to make parents or carers of a child/children involved aware of their obligations with respect to confidentiality
- What, if any, information can be reasonably given to the wider community to reduce speculation
- How to manage press interest if, and when, it arises

### **Record-keeping**

The case manager will maintain clear records about any case where the allegation or concern meets the criteria above and store them on the individual's confidential personnel file for the duration of the case.

The records of any allegation that, following an investigation, is found to be malicious or false will be deleted from the individual's personnel file (unless the individual consents for the records to be retained on the file).

For all other allegations (which are not found to be malicious or false), the following information will be kept on the file of the individual concerned:

- A clear and comprehensive summary of the allegation
- Details of how the allegation was followed up and resolved
- Notes of any action taken, decisions reached and the outcome
- A declaration on whether the information will be referred to in any future reference

In these cases, the school will provide a copy to the individual, in agreement with children's social care or the police as appropriate.

Where records contain information about allegations of sexual abuse, we will preserve these for the Independent Inquiry into Child Sexual Abuse (IICSA), for the term of the inquiry. We will

retain all other records at least until the individual has reached normal pension age, or for 10 years from the date of the allegation if that is longer.

## **References**

When providing employer references, we will:

- Not refer to any allegation that has been found to be false, unfounded, unsubstantiated or malicious, or any repeated allegations which have all been found to be false, unfounded, unsubstantiated or malicious
- Include substantiated allegations, provided that the information is factual and does not include opinions

## **Learning lessons**

After any cases where the allegations are *substantiated*, we will review the circumstances of the case with the local authority's designated officer to determine whether there are any improvements that we can make to the school's procedures or practice to help prevent similar events in the future.

This will include consideration of (as applicable):

- Issues arising from the decision to suspend the member of staff
- The duration of the suspension
- Whether or not the suspension was justified
- The use of suspension when the individual is subsequently reinstated. We will consider how future investigations of a similar nature could be carried out without suspending the individual

For all other cases, the case manager will consider the facts and determine whether any improvements can be made.

## **Non-recent allegations**

Abuse can be reported, no matter how long ago it happened.

We will report any non-recent allegations made by a child to the LADO in line with our local authority's procedures for dealing with non-recent allegations.

Where an adult makes an allegation to the school that they were abused as a child, we will advise the individual to report the allegation to the police.

## Section 2: concerns that do not meet the harm threshold

This section applies to all concerns (including allegations) about members of staff, including supply teachers, volunteers and contractors, which do not meet the harm threshold set out in section 1 above.

Concerns may arise through, for example:

- Suspicion
- Complaint
- Disclosure made by a child, parent or other adult within or outside the school
- Pre-employment vetting checks
- Safeguarding concern or allegation from another member of staff

We recognise the importance of responding to and dealing with any concerns in a timely manner to safeguard the welfare of children.

### Definition of low-level concerns

The term 'low-level' concern is any concern – no matter how small – that an adult working in or on behalf of the school may have acted in a way that:

- Is inconsistent with the staff code of conduct, including inappropriate conduct outside of work, **and**
- Does not meet the allegations threshold or is otherwise not considered serious enough to consider a referral to the designated officer at the local authority

Examples of such behaviour could include, but are not limited to:

- Being overly friendly with children
- Having favourites
- Taking photographs of children on their mobile phone
- Engaging with a child on a one-to-one basis in a secluded area or behind a closed door
- Humiliating pupils

### Sharing low-level concerns

We recognise the importance of creating a culture of openness, trust and transparency to encourage all staff to confidentially share low-level concerns so that they can be addressed appropriately.

We will create this culture by:

- Ensuring staff are clear about what appropriate behaviour is, and are confident in distinguishing expected and appropriate behaviour from concerning, problematic or inappropriate behaviour, in themselves and others
- Empowering staff to share any low-level concerns as per this policy
- Empowering staff to self-refer
- Addressing unprofessional behaviour and supporting the individual to correct it at an early stage



- Providing a responsive, sensitive and proportionate handling of such concerns when they are raised
- Helping to identify any weakness in the school's safeguarding system

### **Responding to low-level concerns**

If the concern is raised via a third party, the headteacher will collect evidence where necessary by speaking:

- Directly to the person who raised the concern, unless it has been raised anonymously
- To the individual involved and any witnesses

The headteacher will use the information collected to categorise the type of behaviour and determine any further action, in line with the school's handbook that includes staff code of conduct. The headteacher will be the ultimate decision-maker in respect of all low-level concerns, though they may wish to collaborate with the DSL.

### **Record keeping**

All low-level concerns will be recorded in writing. In addition to details of the concern raised, records will include the context in which the concern arose, any action taken and the rationale for decisions and action taken.

Records will be:

- Kept confidential, held securely and comply with the DPA 2018 and UK GDPR
- Reviewed so that potential patterns of concerning, problematic or inappropriate behaviour can be identified. Where a pattern of such behaviour is identified, we will decide on a course of action, either through our disciplinary procedures or, where a pattern of behaviour moves from a concern to meeting the harms threshold as described in section 1 of this appendix, we will refer it to the designated officer at the local authority
- Retained at least until the individual leaves employment at the school
- Where a low-level concern relates to a supply teacher or contractor, we will notify the individual's employer, so any potential patterns of inappropriate behaviour can be identified.

### **References**

We will not include low-level concerns in references unless:

- The concern (or group of concerns) has met the threshold for referral to the designated officer at the local authority and is found to be substantiated; and/or
- The concern (or group of concerns) relates to issues which would ordinarily be included in a reference, such as misconduct or poor performance

## Appendix 3 – Specific safeguarding issues

### Children with parents in Prison

Approximately 200,000 children in England and Wales have a parent sent to prison each year. These children are at risk of poor outcomes including poverty, stigma, isolation and poor mental health. NICCO provides information designed to support professionals working with offenders and their children, to help mitigate negative consequences for those children.

<https://www.nicco.org.uk/>

#### Assessing adult-involved nude and semi-nude sharing incidents

All adult-involved nude and semi-nude image sharing incidents are child sexual abuse offences and must immediately be referred to police/social care. However, as adult-involved incidents can present as child-on-child nude/semi-nude sharing, it may be difficult to initially assess adult involvement.

There are two types of common adult-involved incidents: sexually motivated incidents and financially motivated incidents.

#### Sexually motivated incidents

In this type of incident, an adult offender obtains nude and semi-nudes directly from a child or young person using online platforms.

To make initial contact, the offender may present as themselves or use a false identity on the platform, sometimes posing as a child or young person to encourage a response and build trust. The offender often grooms the child or young person on social media, in chatrooms or on gaming platforms, and may then move the conversation to a private messaging app or an end-to-end encrypted (E2EE) environment where a request for a nude or semi-nude is made. To encourage the child or young person to create and share nude or semi-nude, the offender may share pornography or child sexual abuse material (images of other young people), including AI-generated material.

Once a child or young person shares a nude or semi-nude, an offender may blackmail the child or young person into sending more images by threatening to release them online and/or send them to friends and family.

Potential signs of adult-involved grooming and coercion can include the child or young person being:

- Contacted by an online account that they do not know but appears to be another child or young person
- Quickly engaged in sexually explicit communications, which may include the offender sharing unsolicited images
- Moved from a public to a private/E2EE platform
- Coerced/pressured into doing sexual things, including creating nudes and semi-nudes
- Offered something of value such as money or gaming credits
- Threatened or blackmailed into carrying out further sexual activity. This may follow the child or young person initially sharing the image or the offender sharing a digitally manipulated image of the child or young person to extort 'real' images

## Financially motivated incidents

Financially motivated sexual extortion (often known as ‘sextortion’) is an adult-involved incident in which an adult offender (or offenders) threatens to release nudes or semi-nudes of a child or young person unless they pay money or do something else to benefit them.

Unlike other adult-involved incidents, financially motivated sexual extortion is usually carried out by offenders working in sophisticated organised crime groups (OCGs) overseas and are only motivated by profit. Adults are usually targeted by these groups too.

Offenders will often use a false identity, sometimes posing as a child or young person, or hack another young person’s account to make initial contact. To financially blackmail the child or young person, they may:

- Groom or coerce the child or young person into sending nudes or semi-nudes and financially blackmail them
- Use images that have been stolen from the child or young person taken through hacking their account
- Use digitally manipulated images, including AI-generated images, of the child or young person
- The offender may demand payment or the use of the victim’s bank account for the purposes of money laundering.
- Potential signs of adult-involved financially motivated sexual extortion can include the child or young person being:
- Contacted by an online account that they do not know but appears to be another child or young person. They may be contacted by a hacked account of a child or young person
- Quickly engaged in sexually explicit communications which may include the offender sharing an image first
- Moved from a public to a private/E2EE platform
- Pressured into taking nudes or semi-nudes
- Told they have been hacked and they have access to their images, personal information and contacts
- Blackmailed into sending money or sharing bank account details after sharing an image or the offender sharing hacked or digitally manipulated images of the child or young person

## Children who are absent from school

Knowing where children are during school hours is an extremely important aspect of Safeguarding. Missing school can be an indicator of abuse and neglect and may also raise concerns about other safeguarding issues, including the criminal exploitation of children.

We monitor attendance carefully and address poor or irregular attendance without delay.

We will always follow up with parents/carers when pupils are not at school. This means we need to have a least two up to date contacts numbers for parents/carers. Parents should remember to update the school as soon as possible if the numbers change.

In response to the guidance in Keeping Children Safe in Education (2023) the school has:

1. Staff who understand what to do when children do not attend regularly
2. Appropriate policies, procedures and responses for pupils who go missing from education (especially on repeat occasions).
3. Staff who know the signs and triggers for travelling to conflict zones, FGM and forced marriage.
4. Procedures to inform the local authority when we plan to take pupils off-roll when they:
  - a. leave school to be home educated
  - b. move away from the school's location
  - c. remain medically unfit beyond compulsory school age
  - d. are in custody for four months or more (and will not return to school afterwards); or
  - e. are permanently excluded

We will ensure that pupils who are expected to attend the school, but fail to take up the place will be referred to the local authority.

When a pupil leaves the school, we will record the name of the pupil's new school and their expected start date.

## **Children Missing in Education (CME)**

A child going missing from education is a potential indicator of abuse, exploitation or neglect, and such children are at risk of being victims of harm, exploitation or radicalisation.

There are many circumstances where a child may become missing from education, but some children are particularly at risk. These include children who:

- Are at risk of harm or neglect
- Come from Gypsy, Roma, or Traveller families
- Come from the families of service personnel
- Go missing or run away from home or care
- Are supervised by the youth justice system
- Cease to attend a school
- Come from new migrant families

We will follow our procedures for unauthorised absence and for dealing with children who go missing from education, particularly on repeat occasions, to help identify the risk of abuse and neglect, including sexual exploitation, and to help prevent the risks of going missing in future. This includes informing the local authority if a child leaves the school without a new school being named, and adhering to requirements with respect to sharing information with the local authority, when applicable, when removing a child's name from the admission register at non-standard transition points.

Staff will be trained in signs to look out for and the individual triggers to be aware of when considering the risks of potential safeguarding concerns which may be related to being missing, such as travelling to conflict zones, FGM and forced marriage.

If a staff member suspects that a child is suffering from harm or neglect, we will follow local child protection procedures, including with respect to making reasonable enquiries. We will

make an immediate referral to the local authority children's social care team, and the police, if the child is in immediate danger or at risk of harm.

## **Private fostering**

Private fostering means looking after someone else's child who is not related to you, for 28 days or more.

### **Other rules:**

- the child should be under 16 years of age or under 18 years if disabled
- you may be helping a relative or friend by caring for a child for some time. Perhaps you are looking after a child who is studying in this country or who is a refugee

### **A private foster carer might be:**

- extended family e.g. cousin or great aunt
- family friends of the privately fostered child
- someone with no relation to the family – who is willing to privately foster a child
- however, close relatives such as an aunt, grandparent, step-parent, brother or sister looking after a child would not be regarded as a private foster carer

### **Common examples of private fostering arrangements:**

- children from overseas whose parents are working or studying in the UK
- young people who have chosen to live away from their family
- refugee children
- children whose parents have made private arrangements for them to be looked after by someone else
- children who attend boarding school and do not return to their parents during holidays
- children coming from abroad to access education or health resources in this country

### **What professionals should do if they become aware of a privately fostered child**

- professionals should ensure that children's services know about all private fostering arrangements
- Professionals should also encourage the child's parent or carer to notify children's services
- you will not be breaching confidentiality by notifying children's services, but you will be helping to safeguard a child

## **Child criminal exploitation**

Child criminal exploitation (CCE) is a form of abuse where an individual or group takes advantage of an imbalance of power to coerce, control, manipulate or deceive a child into criminal activity. It may involve an exchange for something the victim needs or wants, and/or for the financial or other advantage of the perpetrator or facilitator, and/or through violence or the threat of violence.

The abuse can be perpetrated by males or females, and children or adults. It can be a one-off occurrence or a series of incidents over time, and range from opportunistic to complex organised abuse.

The victim can be exploited even when the activity appears to be consensual. It does not always involve physical contact and can happen online. For example, young people may be

forced to work in cannabis factories, coerced into moving drugs or money across the country (county lines), forced to shoplift or pickpocket, or to threaten other young people.

Indicators of CCE can include a child:

- Appearing with unexplained gifts or new possessions
- Associating with other young people involved in exploitation
- Suffering from changes in emotional wellbeing
- Misusing drugs and alcohol
- Going missing for periods of time or regularly coming home late
- Regularly missing school or education
- Not taking part in education

If a member of staff suspects CCE, they will discuss this with the DSL. The DSL will trigger the local safeguarding procedures, including a referral to the local authority's children's social care team and the police, if appropriate.

## County Lines

County lines County lines is a term used to describe gangs and organised criminal networks involved in exporting illegal drugs (primarily crack cocaine and heroin) into one or more importing areas [within the UK], using dedicated mobile phone lines or other form of "deal line". Exploitation is an integral part of the county lines offending model with children and vulnerable adults exploited to move [and store] drugs and money. Offenders will often use coercion, intimidation, violence (including sexual violence) and weapons to ensure compliance of victims. Children can be targeted and recruited into county lines in a number of locations including schools, further and higher educational institutions, pupil referral units, special educational needs schools, children's homes and care homes. Children are often recruited to move drugs and money between locations and are known to be exposed to techniques such as 'plugging', where drugs are concealed internally to avoid detection. Children can easily become trapped by this type of exploitation as county lines gangs create drug debts and can threaten serious violence and kidnap towards victims (and their families) if they attempt to leave the county lines network.

One of the ways of identifying potential involvement in county lines are missing episodes (both from home and school), when the victim may have been trafficked for the purpose of transporting drugs and a referral to the National Referral Mechanism<sup>103</sup> should be considered. If a child is suspected to be at risk of or involved in county lines, a safeguarding referral should be considered alongside consideration of availability of local services/third sector providers who offer support to victims of county lines exploitation. Further information on the signs of a child's involvement in county lines is available in guidance published by the Home Office.

## Child sexual exploitation

Child sexual exploitation (CSE) is a form of child sexual abuse where an individual or group takes advantage of an imbalance of power to coerce, manipulate or deceive a child into sexual activity. It may involve an exchange for something the victim needs or wants and/or for the financial advantage or increased status of the perpetrator or facilitator. It may, or may not, be accompanied by violence or threats of violence

The abuse can be perpetrated by males or females, and children or adults. It can be a one-off occurrence or a series of incidents over time, and range from opportunistic to complex organised abuse.

The victim can be exploited even when the activity appears to be consensual. Children or young people who are being sexually exploited may not understand that they are being abused. They often trust their abuser and may be tricked into believing they are in a loving, consensual relationship.

CSE can include both physical contact (penetrative and non-penetrative acts) and non-contact sexual activity. It can also happen online. For example, young people may be persuaded or forced to share sexually explicit images of themselves, have sexual conversations by text, or take part in sexual activities using a webcam. CSE may also occur without the victim's immediate knowledge, for example through others copying videos or images.

In addition to the CCE indicators above, indicators of CSE can include a child:

- Having an older boyfriend or girlfriend
- Suffering from sexually transmitted infections or becoming pregnant
- Appearing with unexplained gifts or new possessions
- Associating with other young people involved in exploitation
- Having older boyfriends or girlfriends
- Suffering from sexually transmitted infections or becoming pregnant
- Displaying inappropriate sexualised behaviour
- Suffering from changes in emotional wellbeing
- Misusing drugs and/or alcohol
- Going missing for periods of time, or regularly coming home late
- Regularly missing school or education, or not taking part in education

If a member of staff suspects CSE, they will discuss this with the DSL. The DSL will trigger the local safeguarding procedures, including a referral to the local authority's children's social care team and the police, if appropriate.

## **Domestic abuse**

Children can witness and be adversely affected by domestic abuse and/or violence at home where it occurs between family members. In some cases, a child may blame themselves for the abuse or may have had to leave the family home as a result.

Types of domestic abuse include intimate partner violence, abuse by family members, teenage relationship abuse (abuse in intimate personal relationships between children) and child/adolescent to parent violence and abuse. It can be physical, sexual, financial, psychological or emotional. This can be particularly relevant, for example, in relation to the impact on children of all forms of domestic abuse, including where they see, hear or experience its effects'

Anyone can be a victim of domestic abuse, regardless of gender, age, ethnicity, socioeconomic status, sexuality or background, and domestic abuse can take place inside or outside of the home. Children who witness domestic abuse are also victims.

Exposure to domestic abuse and/or violence can have a serious, long-lasting emotional and psychological impact on children and affect their health, wellbeing, development and ability to learn.

If police are called to an incident of domestic abuse and any children in the household have experienced the incident, the police will inform the key adult in school (usually the designated safeguarding lead) before the child or children arrive at school the following day. This is the procedure where police forces are part of Operation Encompass

The DSL will provide support according to the child's needs and update records about their circumstances.

## **Homelessness**

Being homeless or being at risk of becoming homeless presents a real risk to a child's welfare.

The DSL and safeguarding team will be aware of contact details and referral routes in to the local housing authority so they can raise/progress concerns at the earliest opportunity (where appropriate and in accordance with local procedures).

Where a child has been harmed or is at risk of harm, the DSL will also make a referral to children's social care.

## **So-called 'honour-based' abuse (including FGM and forced marriage)**

So-called 'honour-based' abuse (HBA) encompasses incidents or crimes committed to protect or defend the honour of the family and/or community, including FGM, forced marriage, and practices such as breast ironing.

Abuse committed in this context often involves a wider network of family or community pressure and can include multiple perpetrators.

All forms of HBA are abuse and will be handled and escalated as such. All staff will be alert to the possibility of a child being at risk of HBA or already having suffered it. If staff have a concern, they will speak to the DSL, who will activate local safeguarding procedures.

## **FGM**

The DSL will make sure that staff have access to appropriate training to equip them to be alert to children affected by FGM or at risk of FGM.

This policy sets out the procedures to be followed if a staff member discovers that an act of FGM appears to have been carried out or suspects that a pupil is at risk of FGM.

Indicators that FGM has already occurred include:

- A pupil confiding in a professional that FGM has taken place
- A mother/family member disclosing that FGM has been carried out
- A family/pupil already being known to social services in relation to other safeguarding issues
- A girl:
  - Having difficulty walking, sitting or standing, or looking uncomfortable



- Finding it hard to sit still for long periods of time (where this was not a problem previously)
- Spending longer than normal in the bathroom or toilet due to difficulties urinating
- Having frequent urinary, menstrual or stomach problems
- Avoiding physical exercise or missing PE
- Being repeatedly absent from school, or absent for a prolonged period
- Demonstrating increased emotional and psychological needs – for example, withdrawal or depression, or significant change in behaviour
- Being reluctant to undergo any medical examinations
- Asking for help, but not being explicit about the problem
- Talking about pain or discomfort between her legs

Potential signs that a pupil may be at risk of FGM include:

- The girl's family having a history of practising FGM (this is the biggest risk factor to consider)
- FGM being known to be practised in the girl's community or country of origin
- A parent or family member expressing concern that FGM may be carried out
- A family not engaging with professionals (health, education or other) or already being known to social care in relation to other safeguarding issues
- A girl:
  - Having a mother, older sibling or cousin who has undergone FGM
  - Having limited level of integration within UK society
  - Confiding to a professional that she is to have a "special procedure" or to attend a special occasion to "become a woman"
  - Talking about a long holiday to her country of origin or another country where the practice is prevalent, or parents stating that they or a relative will take the girl out of the country for a prolonged period
  - Requesting help from a teacher or another adult because she is aware or suspects that she is at immediate risk of FGM
  - Talking about FGM in conversation – for example, a girl may tell other children about it (although it is important to take into account the context of the discussion)
  - Being unexpectedly absent from school
  - Having sections missing from her 'red book' (child health record) and/or attending a travel clinic or equivalent for vaccinations/anti-malarial medication

The above indicators and risk factors are not intended to be exhaustive.

## **Forced marriage**

The Marriage and Civil Partnership (Minimum Age) Act 2022 came into force in February 2023 means that 16 and 17 year olds will no longer be allowed to marry or enter a civil partnership, even if they have parental consent. Any concerns that students may be getting married should be referred to the DSL.

Forcing a person into marriage is a crime. A forced marriage is one entered into without the full and free consent of one or both parties and where violence, threats, or any other form of coercion is used to cause a person to enter into a marriage. Threats can be physical or emotional and psychological.

Staff will receive training around forced marriage and the presenting symptoms. We are aware of the 'one chance' rule, i.e. we may only have one chance to speak to the potential victim and only one chance to save them.

If a member of staff suspects that a pupil is being forced into marriage, they will speak to the pupil about their concerns in a secure and private place. They will then report this to the DSL.

The DSL will:

- Speak to the pupil about the concerns in a secure and private place
- Activate the local safeguarding procedures and refer the case to the local authority's designated officer
- Seek advice from the Forced Marriage Unit on 020 7008 0151 or [fm@fco.gov.uk](mailto:fm@fco.gov.uk)
- Refer the pupil to an education welfare officer, pastoral tutor, learning mentor, or school counsellor, as appropriate

## Preventing radicalisation

› **Radicalisation** refers to the process of a person legitimising support for, or use of, terrorist violence

› **Extremism** is the promotion or advancement of an ideology based on violence, hatred or intolerance, that aims to:

- Negate or destroy the fundamental rights and freedoms of others; or
- Undermine, overturn or replace the UK's system of liberal parliamentary democracy and democratic rights; or
- Intentionally create a permissive environment for others to achieve the results outlined in either of the above points
  - **Terrorism** is an action that:
    - Endangers or causes serious violence to a person/people;
    - Causes serious damage to property; or
    - Seriously interferes or disrupts an electronic system

The use or threat of terrorism must be designed to influence the government or to intimidate the public and is made for the purpose of advancing a political, religious or ideological cause.

Schools have a duty to prevent children from becoming involved with or supporting terrorism. The DSL will undertake Prevent awareness training and make sure that staff have access to appropriate training to equip them to identify children at risk.

We will assess the risk of children in our school becoming involved with or supporting terrorism. This assessment will be based on an understanding of the potential risk in our local area, in collaboration with our local safeguarding partners and local police force.

We will ensure that suitable internet filtering is in place, and equip our pupils to stay safe online at school and at home.

There is no single way of identifying an individual who is likely to be susceptible to an radicalisation into terrorism ideology. Radicalisation can occur quickly or over a long period.

Staff will be alert to changes in pupils' behaviour.

The government website [Educate Against Hate](#) and charity [NSPCC](#) say that signs that a pupil is being radicalised can include:

- Refusal to engage with, or becoming abusive to, peers who are different from themselves
- Becoming susceptible to conspiracy theories and feelings of persecution
- Changes in friendship groups and appearance
- Rejecting activities they used to enjoy
- Converting to a new religion
- Isolating themselves from family and friends
- Talking as if from a scripted speech
- An unwillingness or inability to discuss their views
- A sudden disrespectful attitude towards others
- Increased levels of anger
- Increased secretiveness, especially around internet use
- Expressions of sympathy for extremist ideologies and groups, or justification of their actions
- Accessing extremist material online, including on Facebook or Twitter
- Possessing extremist literature
- Being in contact with extremist recruiters and joining, or seeking to join, extremist organisations

Children who are at risk of radicalisation may have low self-esteem, or be victims of bullying or discrimination. It is important to note that these signs can also be part of normal teenage behaviour – staff should have confidence in their instincts and seek advice if something feels wrong.

If staff are concerned about a pupil, they will follow our procedures set out in section 7.5 of this policy, including discussing their concerns with the DSL.

Staff should **always** take action if they are worried.

Further information on the school's measures to prevent radicalisation are set out in other school policies and procedures, including

## **Child-on-child abuse**

Child-on-child abuse is when children abuse other children. This type of abuse can take place inside and outside of school. It can also take place both face-to-face and online, and can occur simultaneously between the 2

Our school has a zero-tolerance approach to sexual violence and sexual harassment. We recognise that even if there are there no reports, that doesn't mean that this kind of abuse isn't happening.

Child-on-child abuse is most likely to include, but may not be limited to:

- Bullying (including cyber-bullying, prejudice-based and discriminatory bullying)
- Abuse in intimate personal relationships between children (this is sometimes known as 'teenage relationship abuse')
- Physical abuse such as hitting, kicking, shaking, biting, hair pulling, or otherwise causing physical harm (this may include an online element which facilitates, threatens and/or encourages physical abuse)

- Sexual violence, such as rape, assault by penetration and sexual assault (this may include an online element which facilitates, threatens and/or encourages sexual violence)
- Sexual harassment, such as sexual comments, remarks, jokes and online sexual harassment, which may be standalone or part of a broader pattern of abuse
- Causing someone to engage in sexual activity without consent, such as forcing someone to strip, touch themselves sexually, or to engage in sexual activity with a third party
- Consensual and non-consensual sharing of nudes and semi nudes images and/or videos (also known as sexting or youth produced sexual imagery)
- Upskirting, which typically involves taking a picture under a person's clothing without their permission, with the intention of viewing their genitals or buttocks to obtain sexual gratification, or cause the victim humiliation, distress or alarm
- Initiation/hazing type violence and rituals (this could include activities involving harassment, abuse or humiliation used as a way of initiating a person into a group and may also include an online element)

Where children abuse their peers online, this can take the form of, for example, abusive, harassing, and misogynistic messages; the non-consensual sharing of indecent images, especially around chat groups; and the sharing of abusive images and pornography, to those who don't want to receive such content.

If staff have any concerns about child-on-child abuse, or a child makes a report to them, they will follow the procedures set out in section 7 of this policy, as appropriate. In particular, section 7.8 and 7.9 set out more detail about our school's approach to this type of abuse.

When considering instances of harmful sexual behaviour between children, we will consider their ages and stages of development. We recognise that children displaying harmful sexual behaviour have often experienced their own abuse and trauma, and will offer them appropriate support.

## **Sexual violence and sexual harassment between children in schools**

Sexual violence and sexual harassment can occur:

- Between 2 children of any age and sex
- Through a group of children sexually assaulting or sexually harassing a single child or group of children
- Online and face to face (both physically and verbally)

Sexual violence and sexual harassment exist on a continuum and may overlap.

Children who are victims of sexual violence and sexual harassment will likely find the experience stressful and distressing. This will, in all likelihood, adversely affect their educational attainment and will be exacerbated if the alleged perpetrator(s) attends the same school.

If a victim reports an incident, it is essential that staff make sure they are reassured that they are being taken seriously and that they will be supported and kept safe. A victim should never be given the impression that they are creating a problem by reporting any form of abuse or neglect. Nor should a victim ever be made to feel ashamed for making a report.

When supporting victims, staff will:

- Reassure victims that the law on child-on-child abuse is there to protect them, not criminalise them
- Regularly review decisions and actions, and update policies with lessons learnt
- Look out for potential patterns of concerning, problematic or inappropriate behaviour, and decide on a course of action where we identify any patterns
- Consider if there are wider cultural issues within the school that enabled inappropriate behaviour to occur and whether revising policies and/or providing extra staff training could minimise the risk of it happening again
- Remain alert to the possible challenges of detecting signs that a child has experienced sexual violence, and show sensitivity to their needs

Some groups are potentially more at risk. Evidence shows that girls, children with SEN and/or disabilities, and lesbian, gay, bisexual and transgender (LGBT) children are at greater risk.

Staff should be aware of the importance of:

- Challenging inappropriate behaviours
- Making clear that sexual violence and sexual harassment is not acceptable, will never be tolerated and is not an inevitable part of growing up
- Challenging physical behaviours (potentially criminal in nature), such as grabbing bottoms, breasts and genitalia, pulling down trousers, flicking bras and lifting up skirts. Dismissing or tolerating such behaviours risks normalising them

If staff have any concerns about sexual violence or sexual harassment, or a child makes a report to them, they will follow the procedures set out in section 7 of this policy, as appropriate. In particular, section 7.8 and 7.9 set out more detail about our school's approach to this type of abuse.

## **Serious violence**

Indicators which may signal that a child is at risk from, or involved with, serious violent crime may include:

- Increased absence from school
- Change in friendships or relationships with older individuals or groups
- Significant decline in performance
- Signs of self-harm or a significant change in wellbeing
- Signs of assault or unexplained injuries
- Unexplained gifts or new possessions (this could indicate that the child has been approached by, or is involved with, individuals associated with criminal networks or gangs and may be at risk of criminal exploitation (see above))
- Risk factors which increase the likelihood of involvement in serious violence include:
  - Being male
  - Having been frequently absent or permanently excluded from school
  - Having experienced child maltreatment
  - Having been involved in offending, such as theft or robbery

Staff will be aware of these indicators and risk factors. If a member of staff has a concern about a pupil being involved in, or at risk of, serious violence, they will report this to the DSL.

## **Checking the identity and suitability of visitors**

All visitors will be required to verify their identity to the satisfaction of staff and to leave their belongings, including their mobile phone(s), in a safe place during their visit.

If the visitor is unknown to the setting, we will check their credentials and reason for visiting before allowing them to enter the setting. Visitors should be ready to produce identification.

Visitors are expected to sign in using the electronic sign in system and wear the printed badge/Sticker.

Visitors to the school who are visiting for a professional purpose, such as educational psychologists and school improvement officers, will be asked to show photo ID and:

- Will be asked to show their DBS certificate, which will be checked alongside their photo ID; or
- The organisation sending the professional, such as the LA or educational psychology service, will provide prior written confirmation that an appropriate level of DBS check has been carried out (if this is provided, we will not ask to see the DBS certificate)

All visitors to our setting, including visiting speakers, will be accompanied by a member of staff at all times. We will not invite into the school any speaker who is known to disseminate extremist views, and will carry out appropriate checks to ensure that any individual or organisation using school facilities is not seeking to disseminate extremist views or radicalise pupils or staff.

## **Non-collection of children**

If a child is not collected at the end of the session/day, we will:

- Telephone all contacts on pupil record.
- If the pupil remains uncollected and no contact has been made with emergency contacts a referral to children's services will be made.